

An aerial photograph of a beach. The top half of the image shows deep turquoise water with a textured, rippled surface. The bottom half shows a wide, white sandy beach. The water meets the sand in a gentle, wavy pattern. Centered in the image is a large, white, stylized logo consisting of the letters 'LIV' in a bold, rounded font.

LIV

H O M E S































































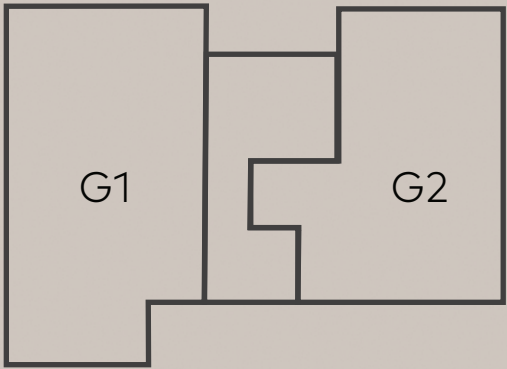


## RESIDENCES

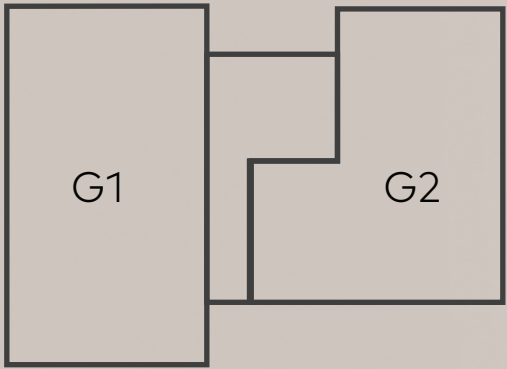
Choose your dream home among a collection of 13 luxury apartments, maisonettes and penthouses.



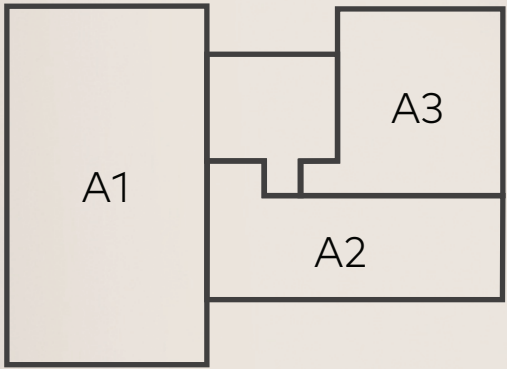
# TYPOLOGIES



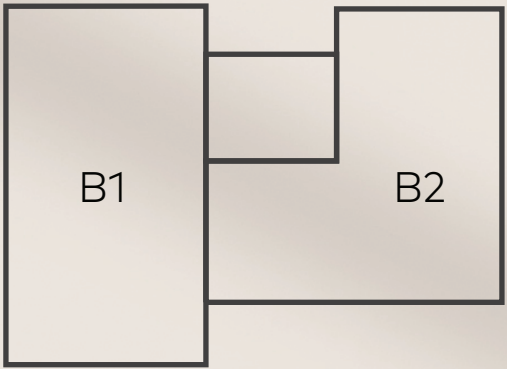
BASEMENT



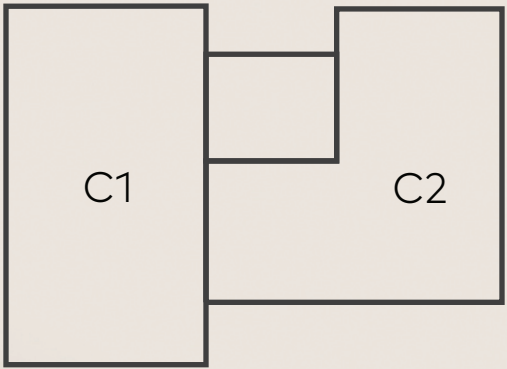
GROUND FLOOR



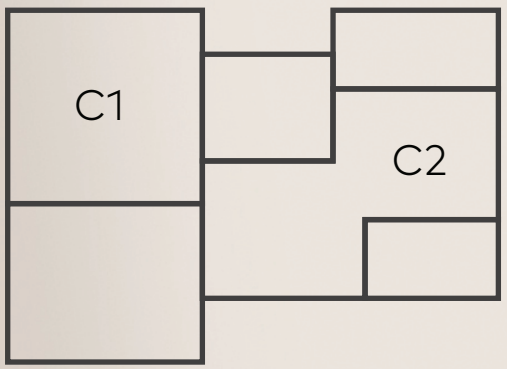
1ST FLOOR



2ST FLOOR



3RD FLOOR



ATTIC

2 GROUND FLOOR MAISONNETTES

5 ONE LEVEL APARTMENTS

2 TOP FLOOR MAISONNETTES

SPARTIS STREET

# CHOICE OF PROPERTIES

STATUS	NAME	LEVEL	PRICE	INDOOR (m²)	OUTDOOR (m²)	GARDEN	BALCONY	BEDROOMS	BATHROOMS	WC	PARKING	POOL /HOT TUB	WAREHOUSE	ORIENTATION
AVAILABLE	G1	BG - GF	1.300.000 €	245	339	✓	-	4	4	2	✓	✓	✓	-
AVAILABLE	G2	BG - GF	1.200.000 €	215	247	✓	-	4	3	2	✓	✓	✓	-
AVAILABLE	A1	1ST	720.000 €	107	29	-	✓	2	2	-	✓	-	✓	-
BOOKED	A2	1ST	-	89	37	-	✓	2	2	-	✓	-	✓	-
BOOKED	A3	1ST	-	62.5	16	-	✓	1	1	-	✓	-	✓	-
BOOKED	B1	2ND	-	132	37	-	✓	3	2	1	✓	-	✓	-
AVAILABLE	B2	2ND	865.000 €	129	38	-	✓	2	2	1	✓	-	✓	-
AVAILABLE	C1	3RD - 4TH	1.750.000 €	205	70	-	✓	4	4	1	✓	-	✓	-
AVAILABLE	C2	3RD - 4TH	1.700.000 €	214	70	-	✓	4	4	1	✓	-	✓	-

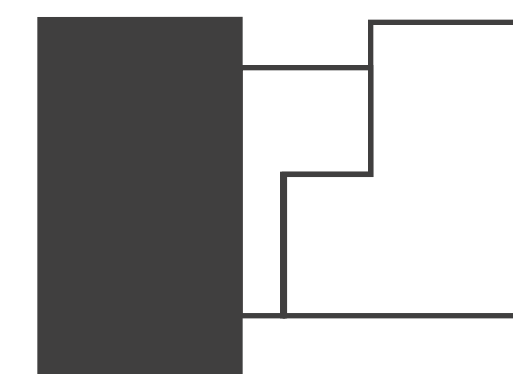




**LIV** INTERIORS  
H O M E S



G1

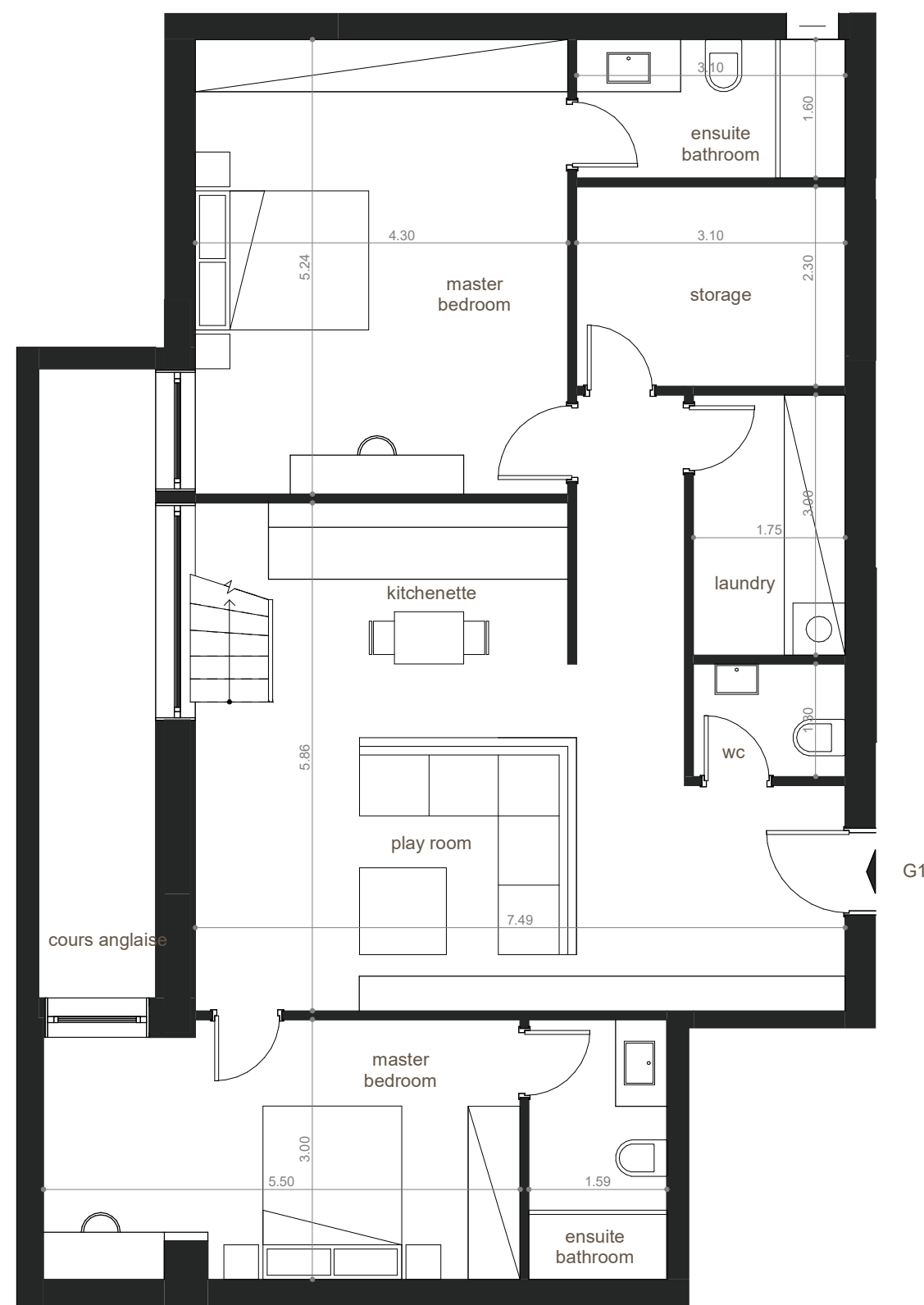


GARDEN MAISONETTE

Area	245 sqm
Basement	122.5 sqm
Ground Floor	122.5 sqm
Indoor Spaces	
4 Bedrooms	
4 Bathrooms	
2 Guest WC	
1 Laundry room	
1 Storage room - Internal	
2 Parking spaces - P05, P05.1	
Outdoor Area	339 sqm
Garden	
Swimming pool	
Cours-anglaise	

NOTE

All of the interior plans and 3D images, consist of indicative information and the project can differ from the displayd result. The furnishings are only included for illustration purposes. All rights reserved.



BASEMENT



GROUND FLOOR







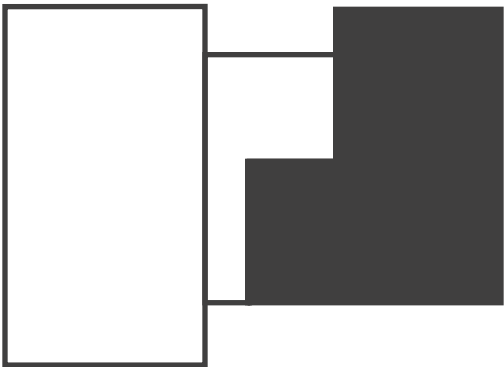




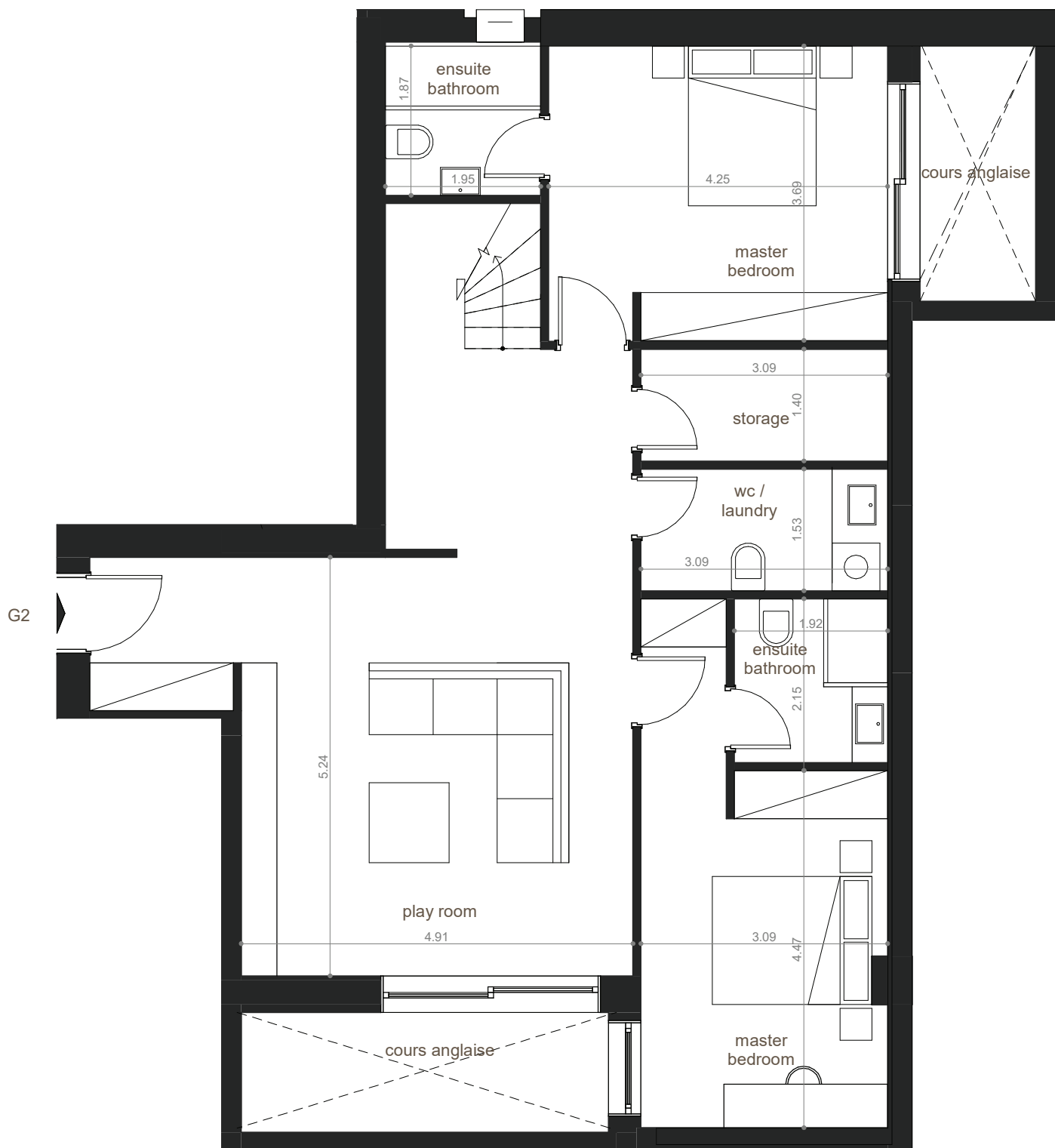




# G2



GARDEN MAISONETTE



BASEMENT



GROUND FLOOR

Area	215 sqm
Basement	107.5 sqm
Ground Floor	107.5 sqm
Indoor Spaces	
4 Bedrooms	
3 Bathrooms	
2 Guest WC	
1 Laundry room / WC	
1 Storage room - Int	
1 Parking space - P07	
Outdoor Area	247 sqm
Garden	
Swimming pool	
Cours-anglaise	

NOTE

All of the interior plans and 3D images, consist of indicative information and the project can differ from the display result. The furnishings are only included for illustration purposes. All rights reserved.



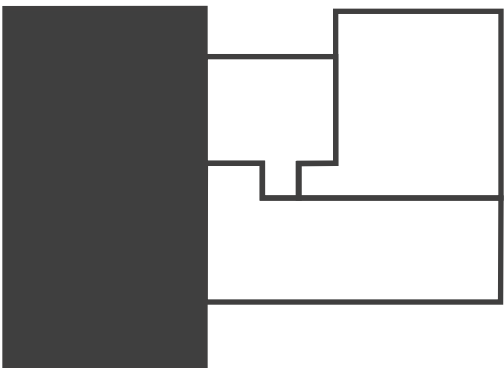








A1



APARTMENT

Area107 sqm

First Floor

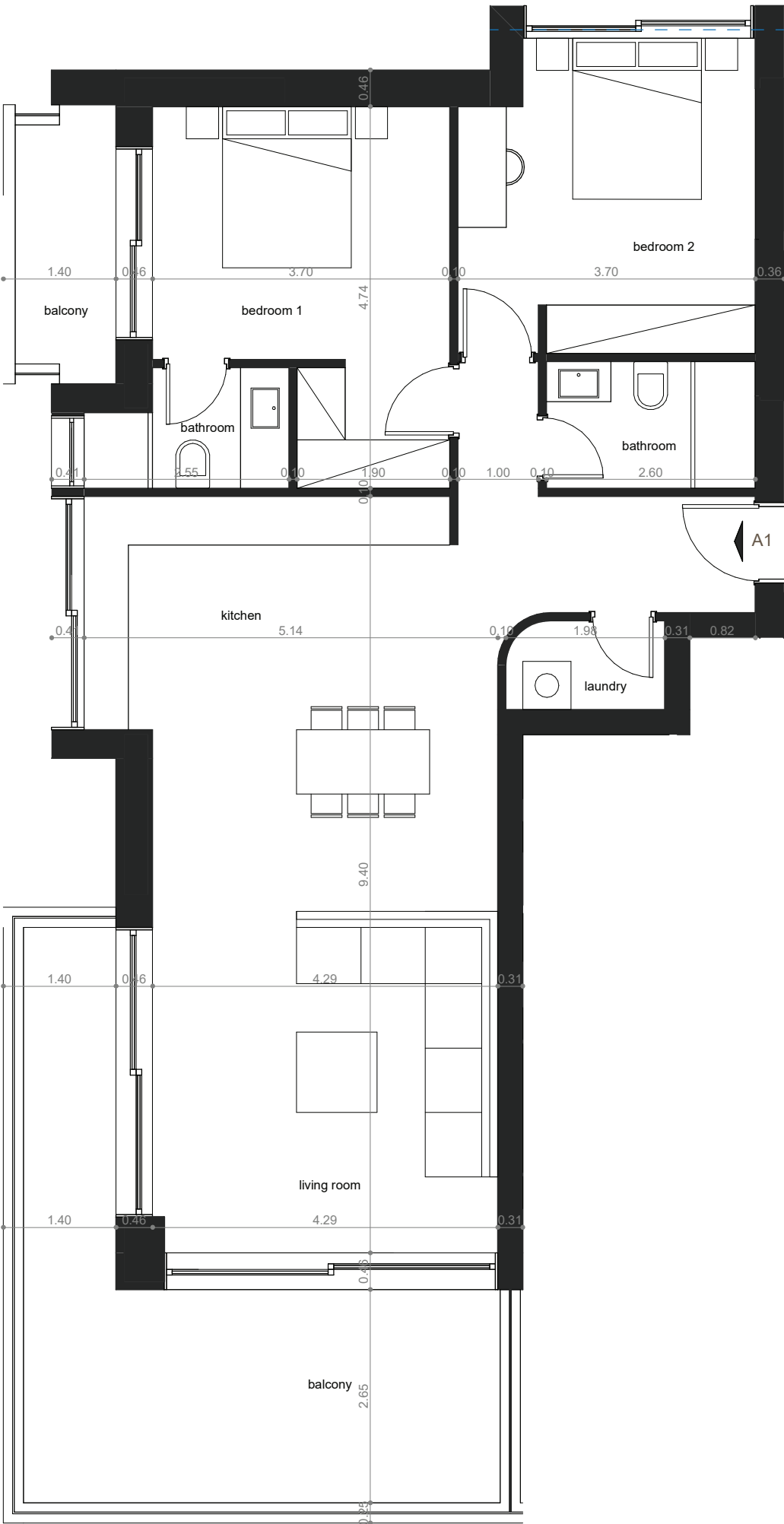
Indoor Spaces

- 2 Bedrooms
- 2 Bathrooms
- 1 Laudry room
- 1 Storage room - S06
- 1 Parking space - P01

Outdoor Area29 sqm

Balcony

FIRST FLOOR

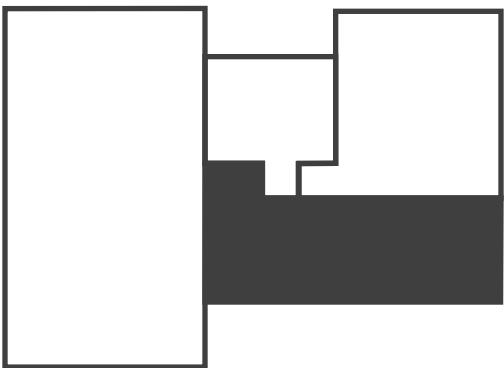


NOTE

All of the interior plans and 3D images, consist of indicative information and the project can differ from the displayd result. The furnishings are only included for illustration purposes. All rights reserved.



# A2



APARTMENT

Area89 sqm

First Floor

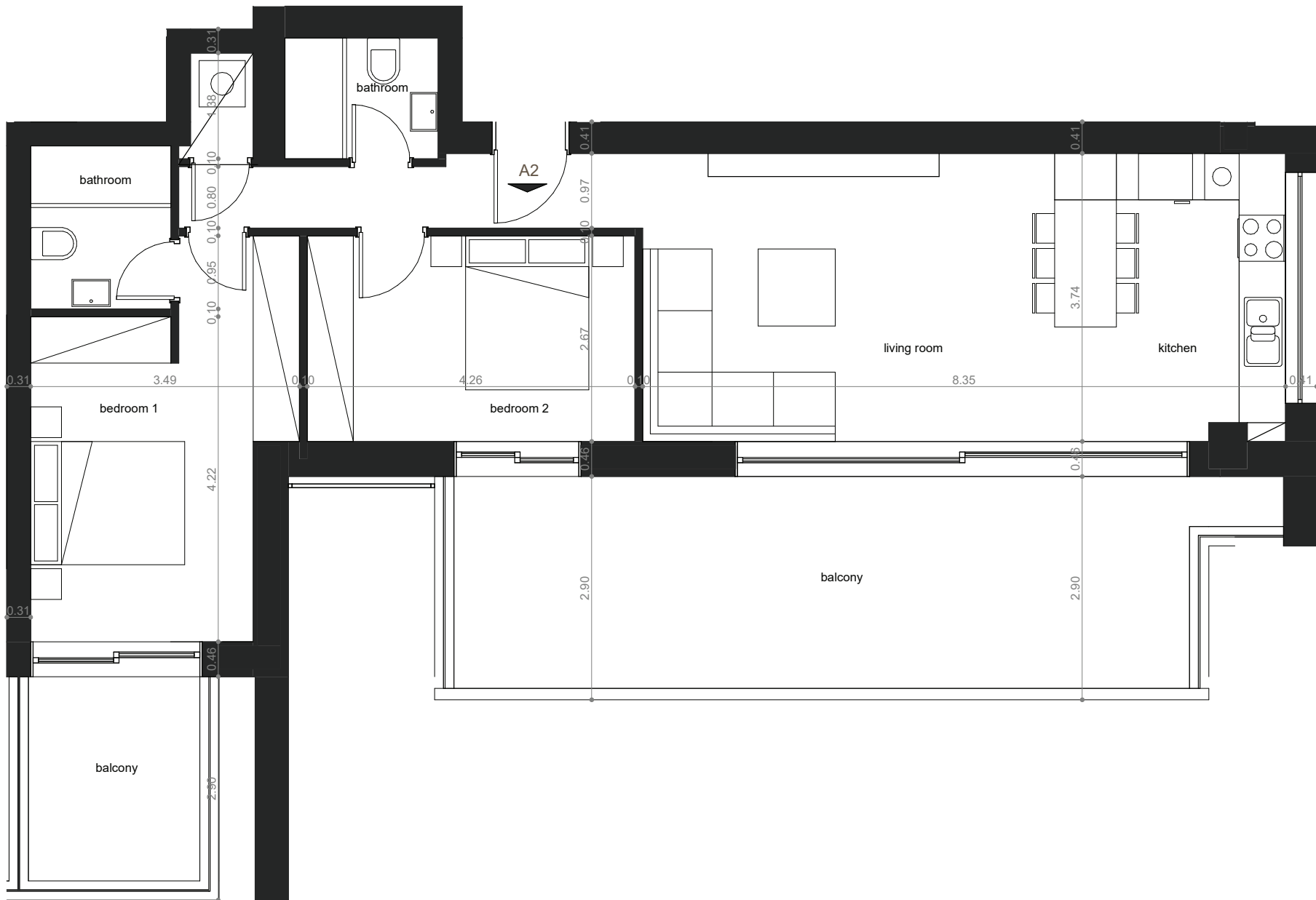
Indoor Spaces

- 2 Bedrooms
- 2 Bathrooms
- 1 Storage room - S05
- 1 Parking space - P10

Outdoor Area37 sqm

Balcony

FIRST FLOOR

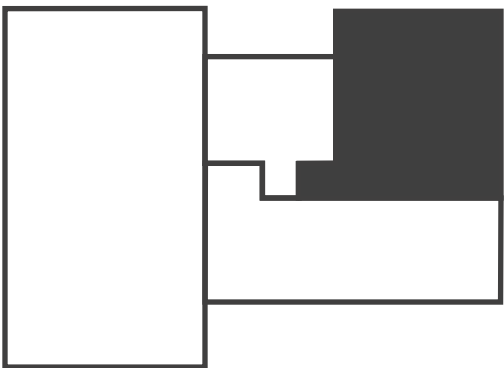


NOTE

All of the interior plans and 3D images, consist of indicative information and the project can differ from the displayd result. The furnishings are only included for illustration purposes. All rights reserved.



A3



APARTMENT

Area62.5 sqm

First Floor

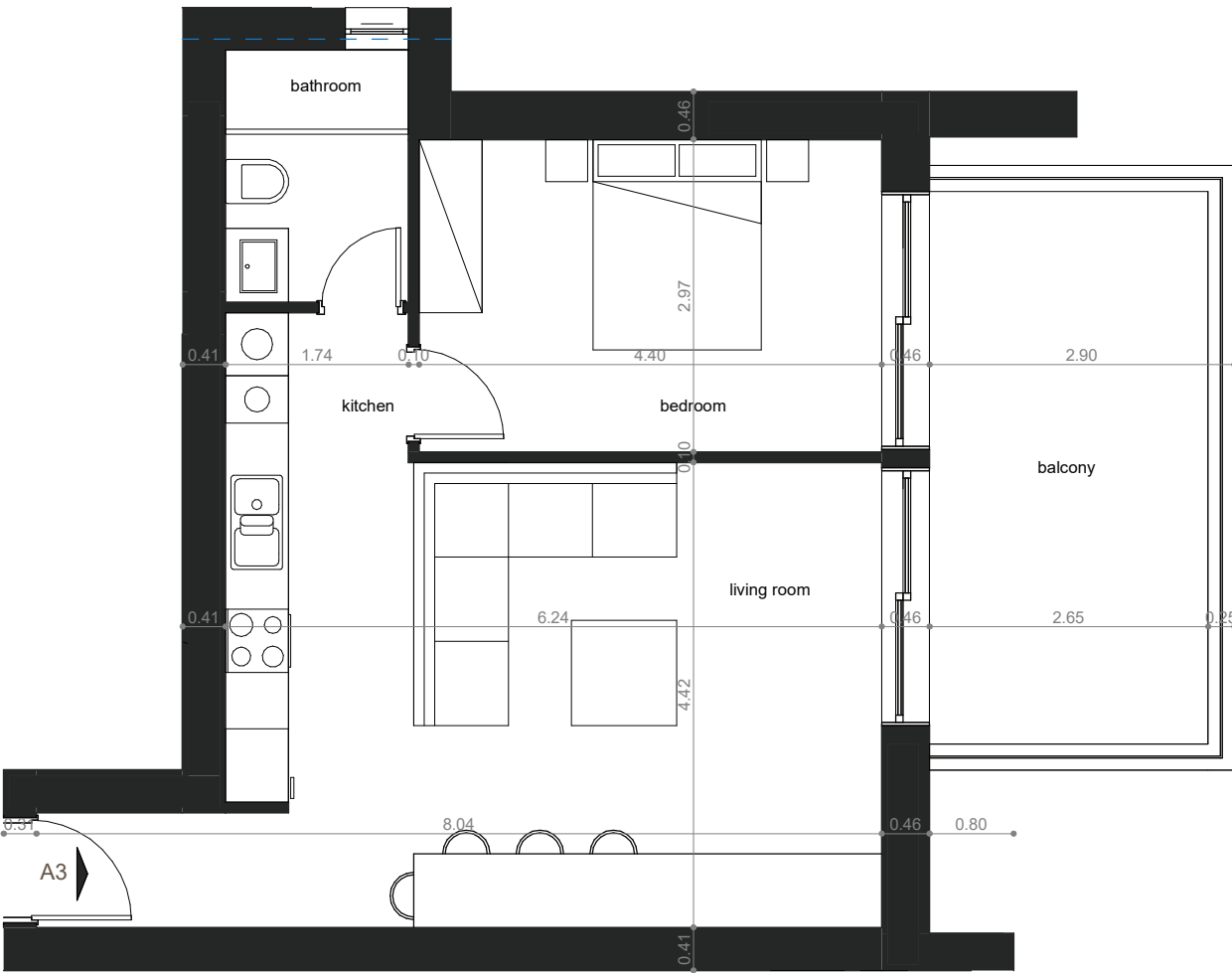
Indoor Spaces

- 1 Bedrooms
- 1 Bathrooms
- 1 Storage room - S02
- 1 Parking spaces - P11

Outdoor Area16 sqm

Balcony

FIRST FLOOR

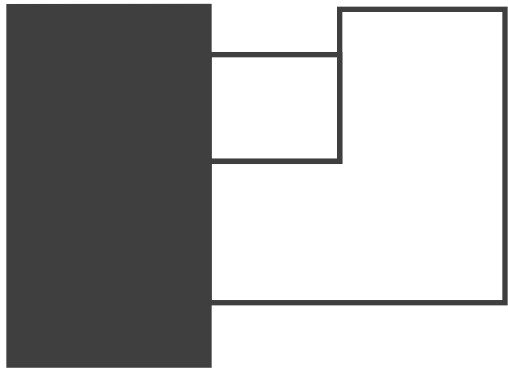


NOTE

All of the interior plans and 3D images, consist of indicative information and the project can differ from the displayd result. The furnishings are only included for illustration purposes. All rights reserved.

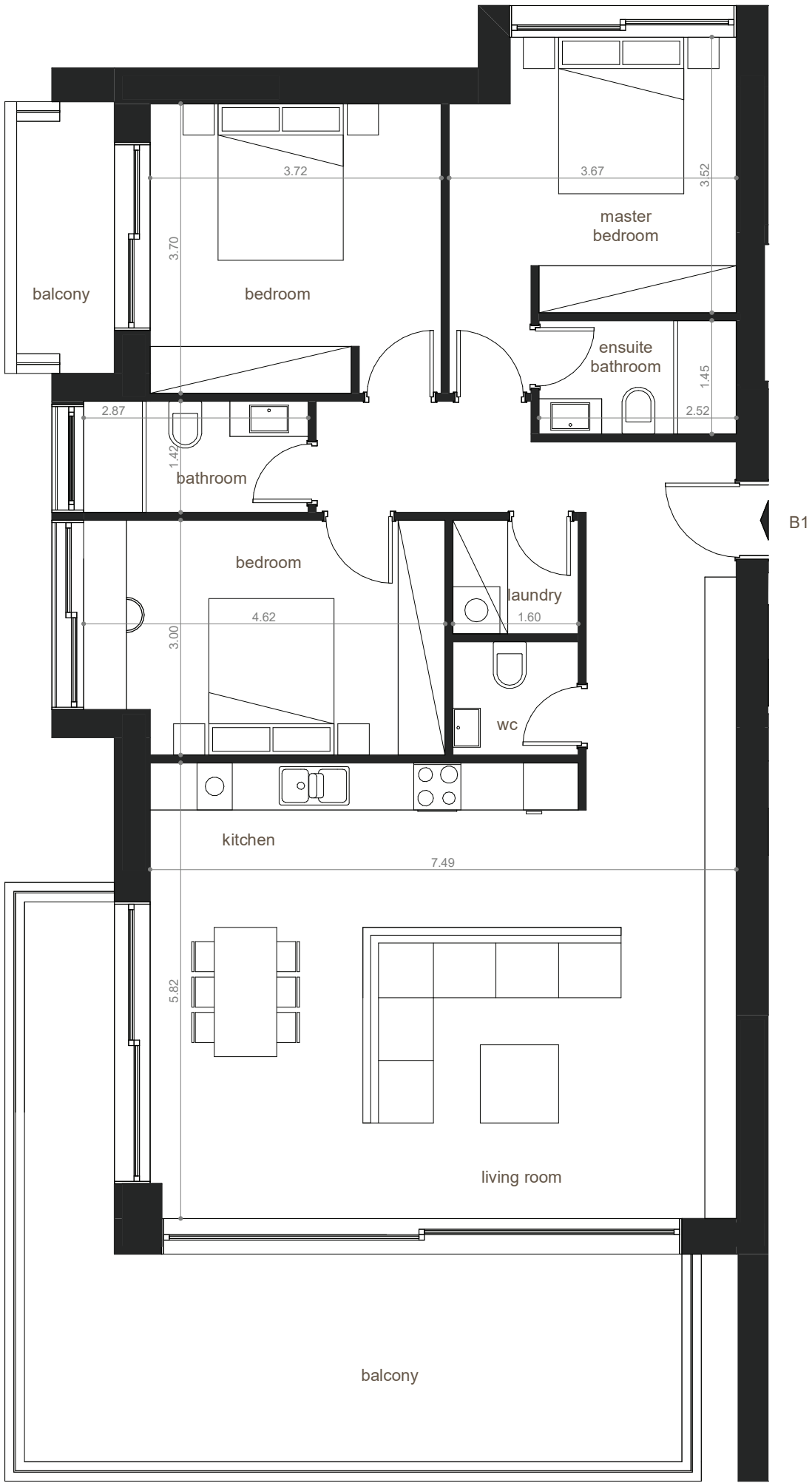


# B1



APARTMENT

## SECOND FLOOR



Area 132 sqm

Second Floor

### Indoor Spaces

- 3 Bedrooms
- 2 Bathrooms
- 1 Guest WC
- 1 Laundry room
- 1 Storage room - S04
- 1 Parking spaces - P08

Outdoor Area 37 sqm

Balcony

### NOTE

All of the interior plans and 3D images, consist of indicative information and the project can differ from the display result. The furnishings are only included for illustration purposes. All rights reserved.



# B2



APARTMENT

Area129 sqm

Second Floor

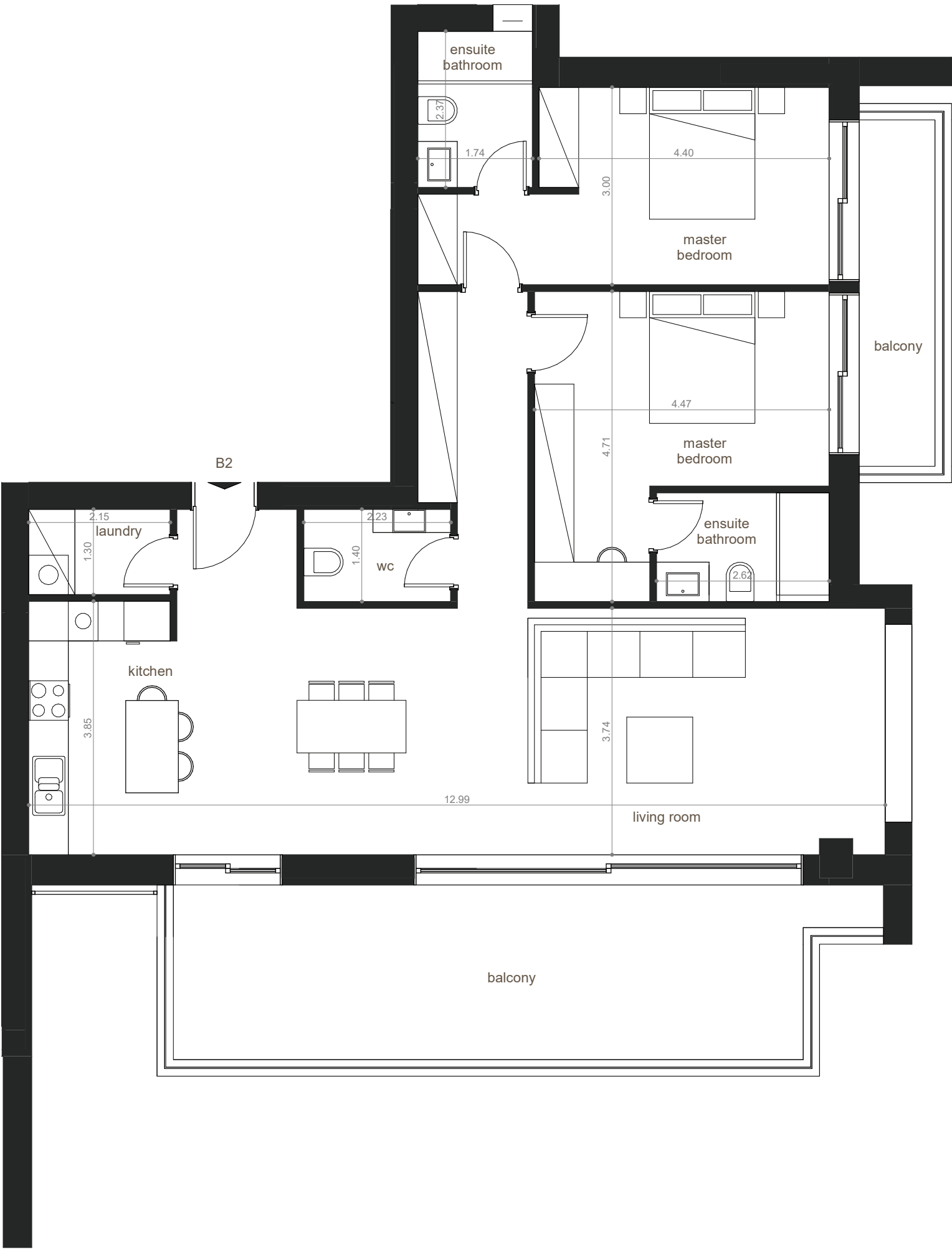
Indoor Spaces

- 2 Bedrooms
- 2 Bathrooms
- 1 Guest WC
- 1 Laudry room
- 1 Storage room - S07
- 1 Parking spaces - P09

Outdoor Area38 sqm

Balcony

## SECOND FLOOR

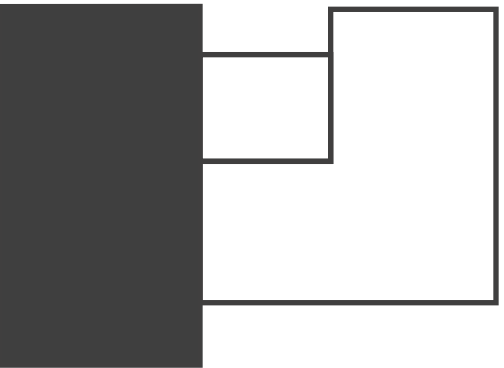


NOTE

All of the interior plans and 3D images, consist of indicative information and the project can differ from the displayd result. The furnishings are only included for illustration purposes. All rights reserved.



C1



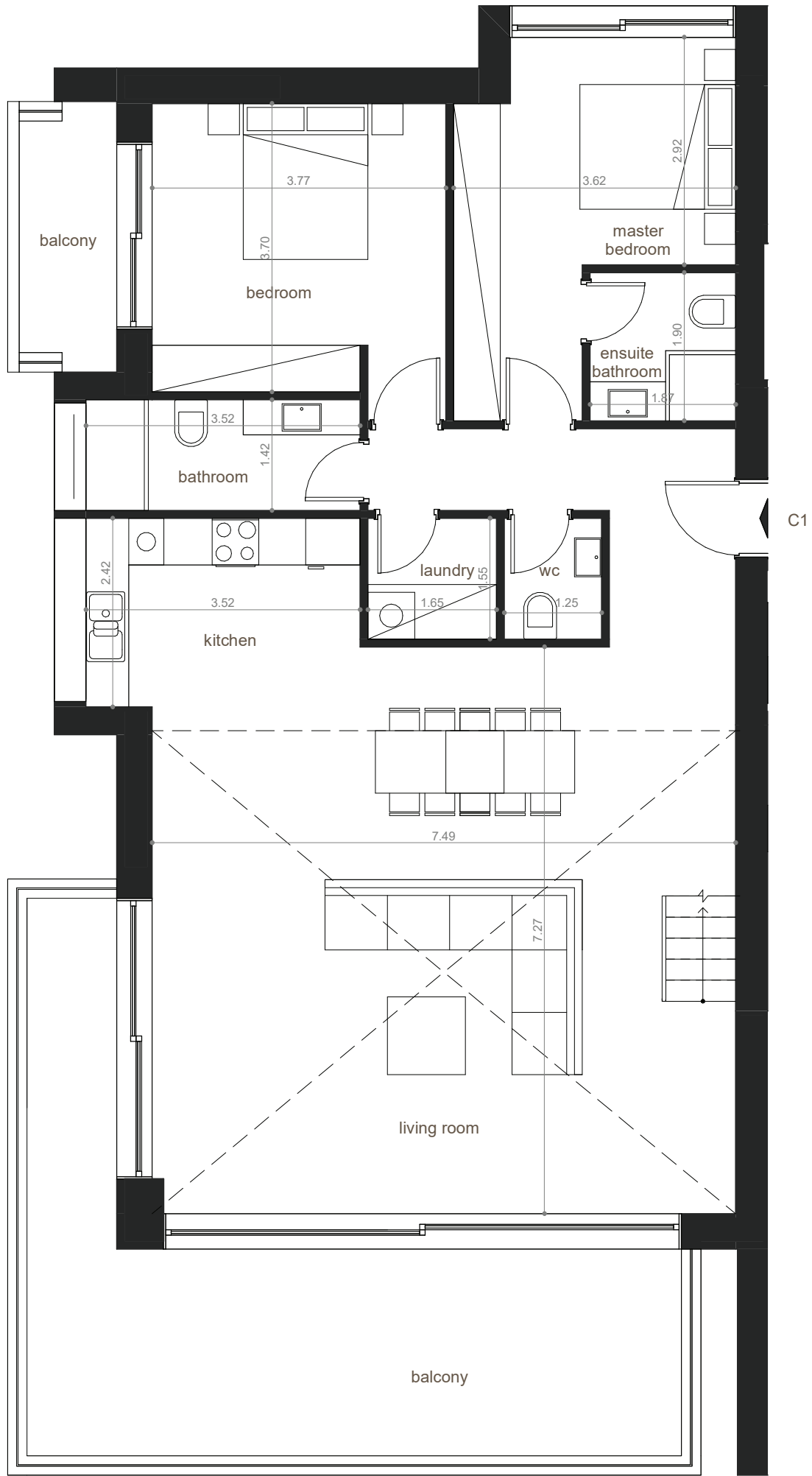
TOP MAISONETTE

Area	205 sqm
Third Floor	132 sqm
Attic	73 sqm

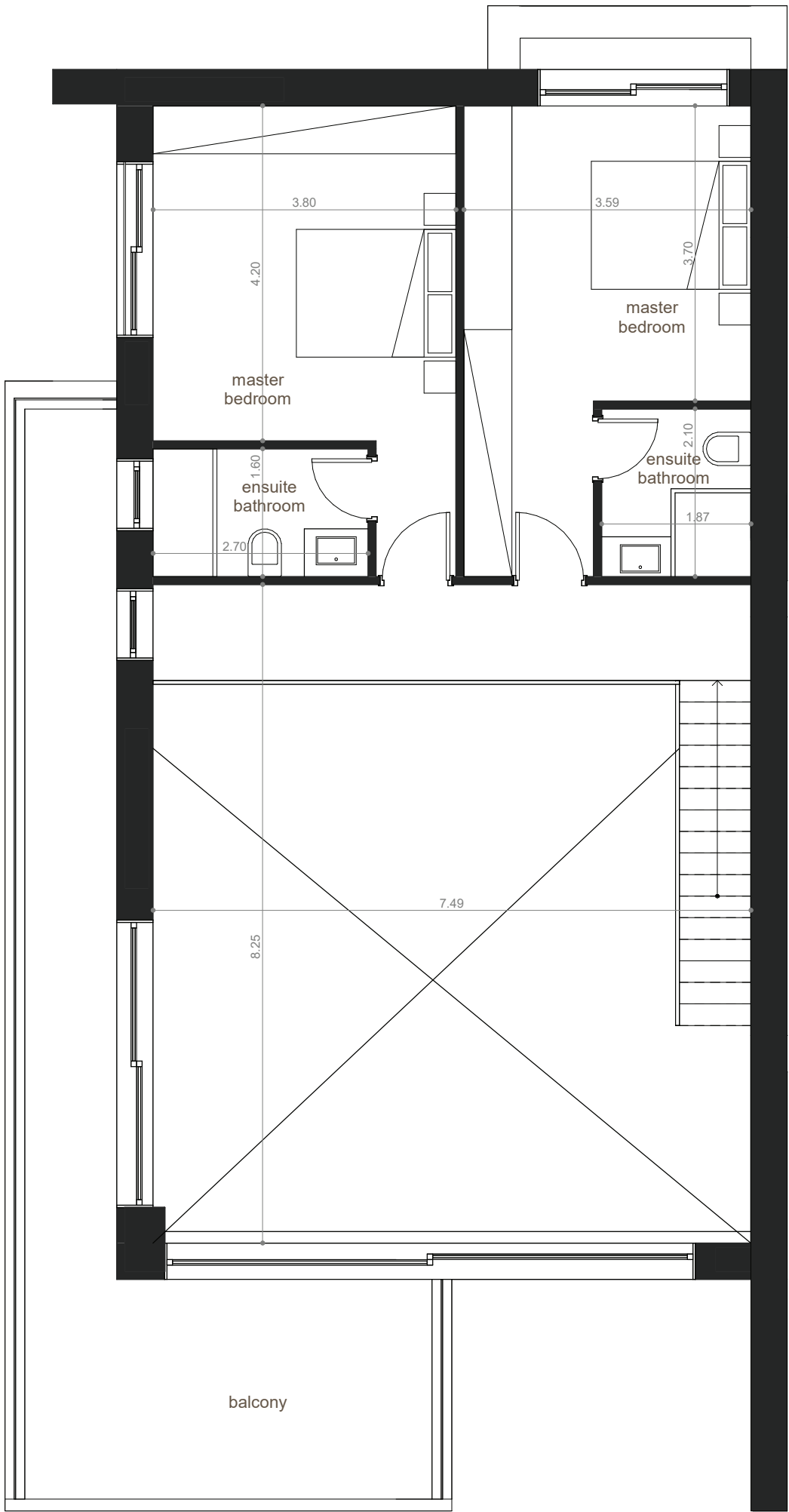
- Indoor Spaces
- 4 Bedrooms
  - 4 Bathrooms
  - 1 Guest WC
  - 1 Laudry room
  - 1 Storage room - S03
  - 2 Parking spaces - P03, P03.1

Outdoor Area	70 sqm
Balcony	

Sea view



THIRD FLOOR



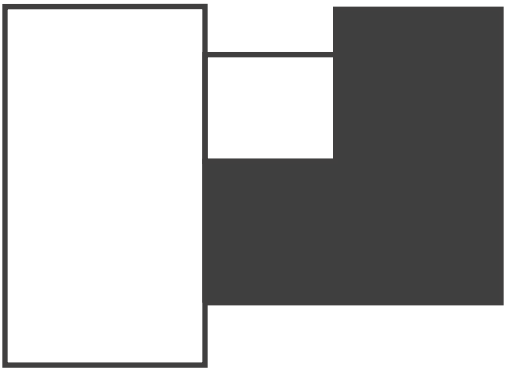
FOURTH FLOOR

NOTE

All of the interior plans and 3D images, consist of indicative information and the project can differ from the display result. The furnishings are only included for illustration purposes. All rights reserved.



C2



TOP MAISONNETTE

Area	214 sqm
Third Floor	129 sqm
Attic	85 sqm

- Indoor Spaces
- 4 Bedrooms
  - 4 Bathrooms
  - 1 Guest WC
  - 1 Laudry room
  - 1 Storage room - S01
  - 2 Parking spaces - P04, P04.1

Outdoor Area	70 sqm
Balcony	

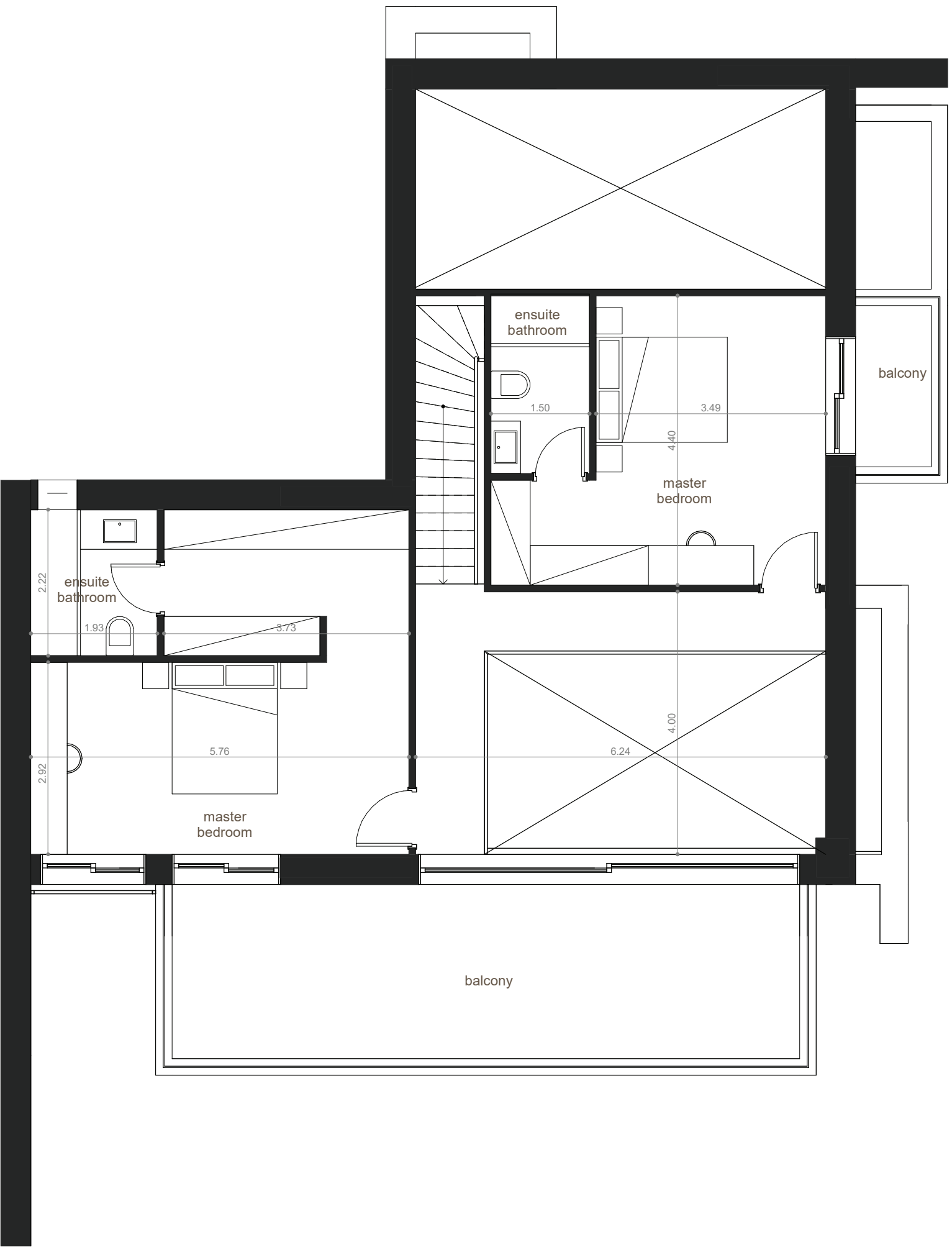
Sea view

NOTE

All of the interior plans and 3D images, consist of indicative information and the project can differ from the display result. The furnishings are only included for illustration purposes. All rights reserved.



THIRD FLOOR



FOURTH FLOOR



- Certified high grade concrete
- External themal insulation
- Thermo-switching frames with low-e Crystals
- Fan-coil cooling
- Top choice of air conditioning and heating system with heat pump
- Balcony rails from triplex crystals
- Top-quality waterproofing built-in shower set with removable head plate
- Photovoltaic panels
- Infrastructure for Alarm system
- Half-timbered oak floors
- High quality ceramic tiles for indoor and outdoor use
- Safety doors
- Wardrobes and kitchens from laquer, natural wood veneer
- Private parking and storage spaces

NOTE Movable furniture, home appliances and interior items are extras

A++







#### **GREECE OFFICE**

38 Leof. Vasileos Konstantinou  
Pagrati | 116 35 Athens

**M** + 30 693 686 5200

**T** + 30 210 440 9111

**W** [www.livhomes.gr](http://www.livhomes.gr)

#### **LEBANON OFFICE**

The Bridge Center | 5th floor  
Saloumeh | Sin El Fil

**M** + 961 81 666 708

**T** + 961 1 492 489

**E** [hello@livhomes.gr](mailto:hello@livhomes.gr)