



# LIV

H O M E S



























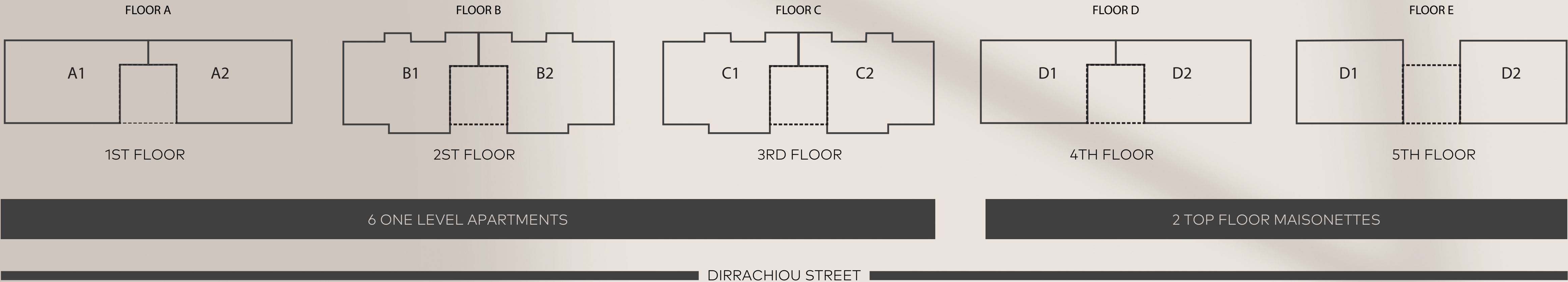


## RESIDENCES

Choose your dream home among a collection of 8 luxury apartments and maisonettes.



# TYPOLOGIES



## CHOICE OF PROPERTIES

NAME	LEVEL	PRICE	INDOOR (m²)	OUTDOOR (m²)	BALCONY	BEDROOMS	BATHROOMS	WC	PARKING	WAREHOUSE
A1	1ST	420.000€	87	21	✓	2	2	-	✓	✓
A2	1ST	410.000€	87	21	✓	2	2	-	✓	✓
B1	2ND	440.000€	90	25	✓	2	2	-	✓	✓
B2	2ND	430.000€	90	25	✓	2	2	-	✓	✓
C1	3RD	465.000€	90	25	✓	2	2	-	✓	✓
C2	3RD	450.000€	90	25	✓	2	2	-	✓	✓
D1	4TH - 5TH	760.000€	138	50	✓	3	2	1	✓	✓
D2	4TH - 5TH	720.000€	138	50	✓	3	2	1	✓	✓





**LIV** INTERIORS  
H O M E S



# A1



1ST FLOOR APARTMENT

**Area**  
First Floor 87 sqm

- Indoor Spaces**
- 2 Bedrooms
  - 2 Bathrooms
  - 1 Storage room - ΑΠ8
  - 1 Parking space - ΘΣ10

**Outdoor Area**  
Balcony 21 sqm

NOTE

All of the interior plans and 3D images, consist of indicative information and the project can differ from the display result. The furnishings are only included for illustration purposes. All rights reserved.

FIRST FLOOR





# A2



1ST FLOOR APARTMENT

**Area**  
First Floor 87 sqm

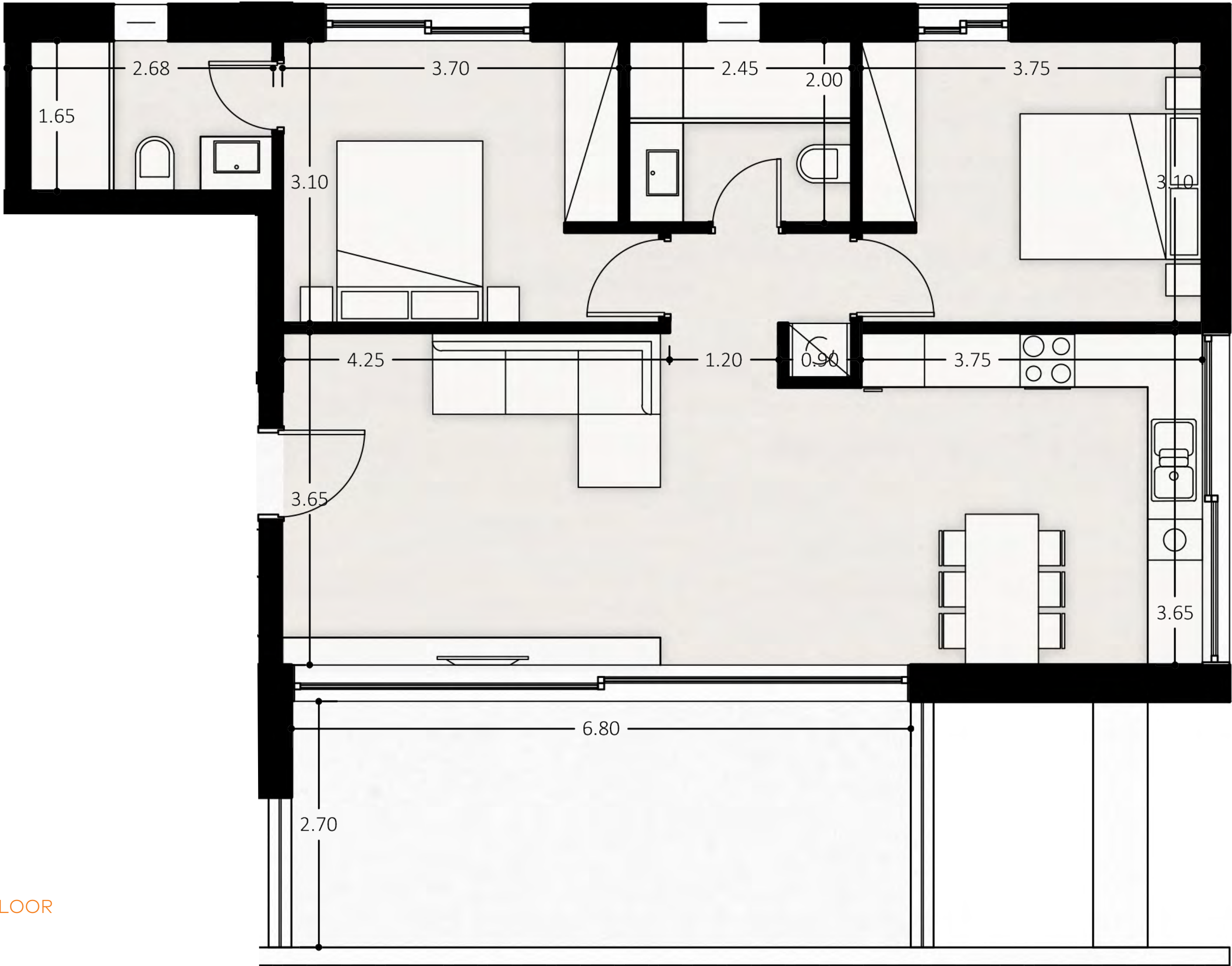
- Indoor Spaces**
- 2 Bedrooms
  - 2 Bathrooms
  - 1 Storage room - ΑΠ1
  - 1 Parking space - ΘΣ11

**Outdoor Area**  
Balcony 21 sqm

NOTE

All of the interior plans and 3D images, consist of indicative information and the project can differ from the display result. The furnishings are only included for illustration purposes. All rights reserved.

FIRST FLOOR





# B1 || C1



2ND FLOOR APARTMENT ||  
3RD FLOOR APARTMENT

Area  
First Floor 90sqm

- Indoor Spaces
- 2 Bedrooms
  - 2 Bathrooms
  - 1 Storage room - ΑΠ2 || ΑΠ5
  - 1 Parking space - ΘΣ9 || ΘΣ8

Outdoor Area  
Balcony 25 sqm



SECOND FLOOR || THIRD FLOOR

NOTE

All of the interior plans and 3D images, consist of indicative information and the project can differ from the displayd result. The furnishings are only included for illustration purposes. All rights reserved.



# B2 || C2



2ND FLOOR APARTMENT ||  
3RD FLOOR APARTMENT

**Area**  
Second Floor 90sqm

- Indoor Spaces**
- 2 Bedrooms
  - 2 Bathrooms
  - 1 Storage room - ΑΠ4 | ΑΠ3
  - 1 Parking space - ΘΣ7 | ΘΣ12

**Outdoor Area**  
Balcony 25 sqm



SECOND FLOOR || THIRD FLOOR









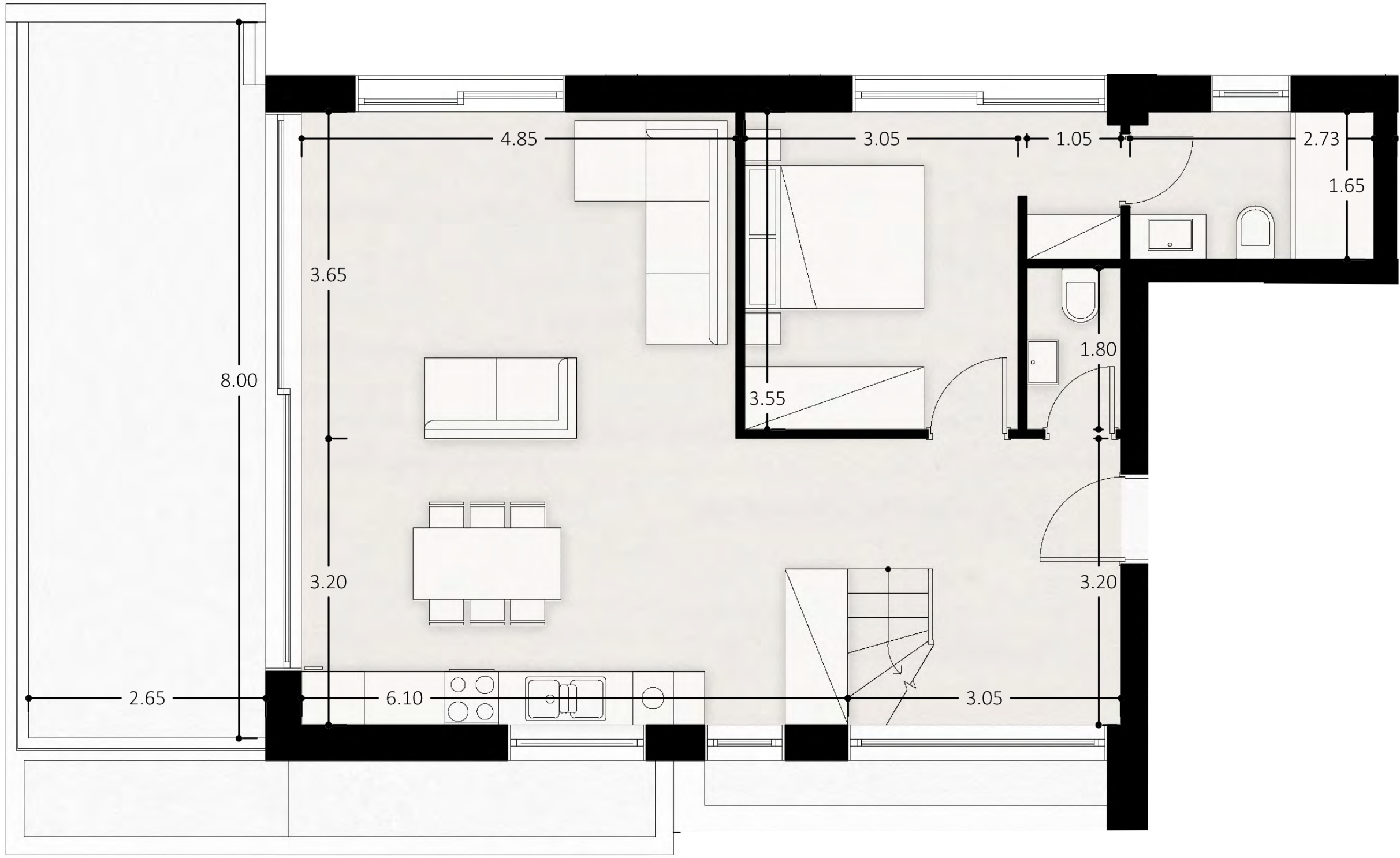




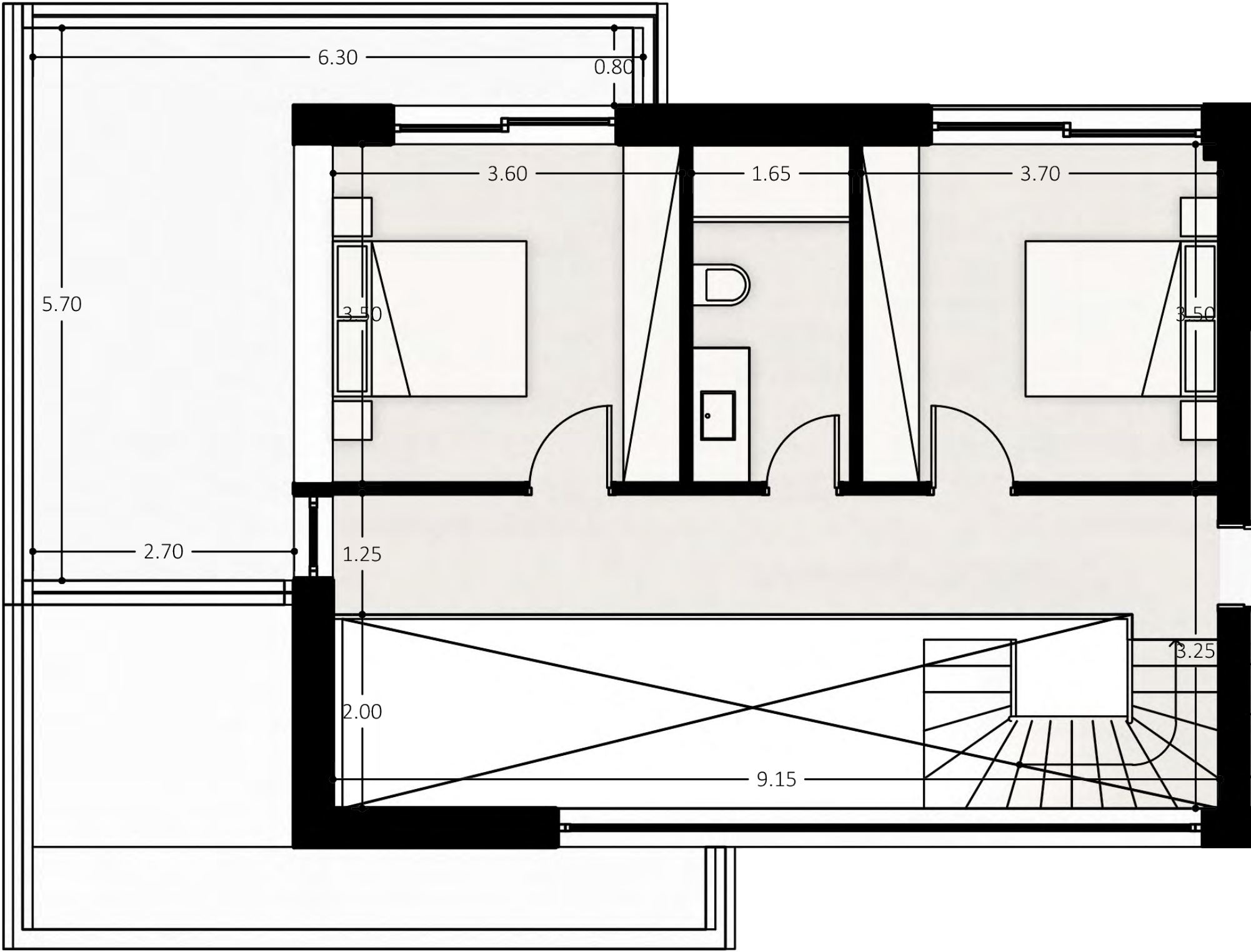








THIRD FLOOR



FOURTH FLOOR

D1



1ST FLOOR APARTMENT

Area	138 sqm
Third Floor	81 sqm
Fourth Floor	57 sqm

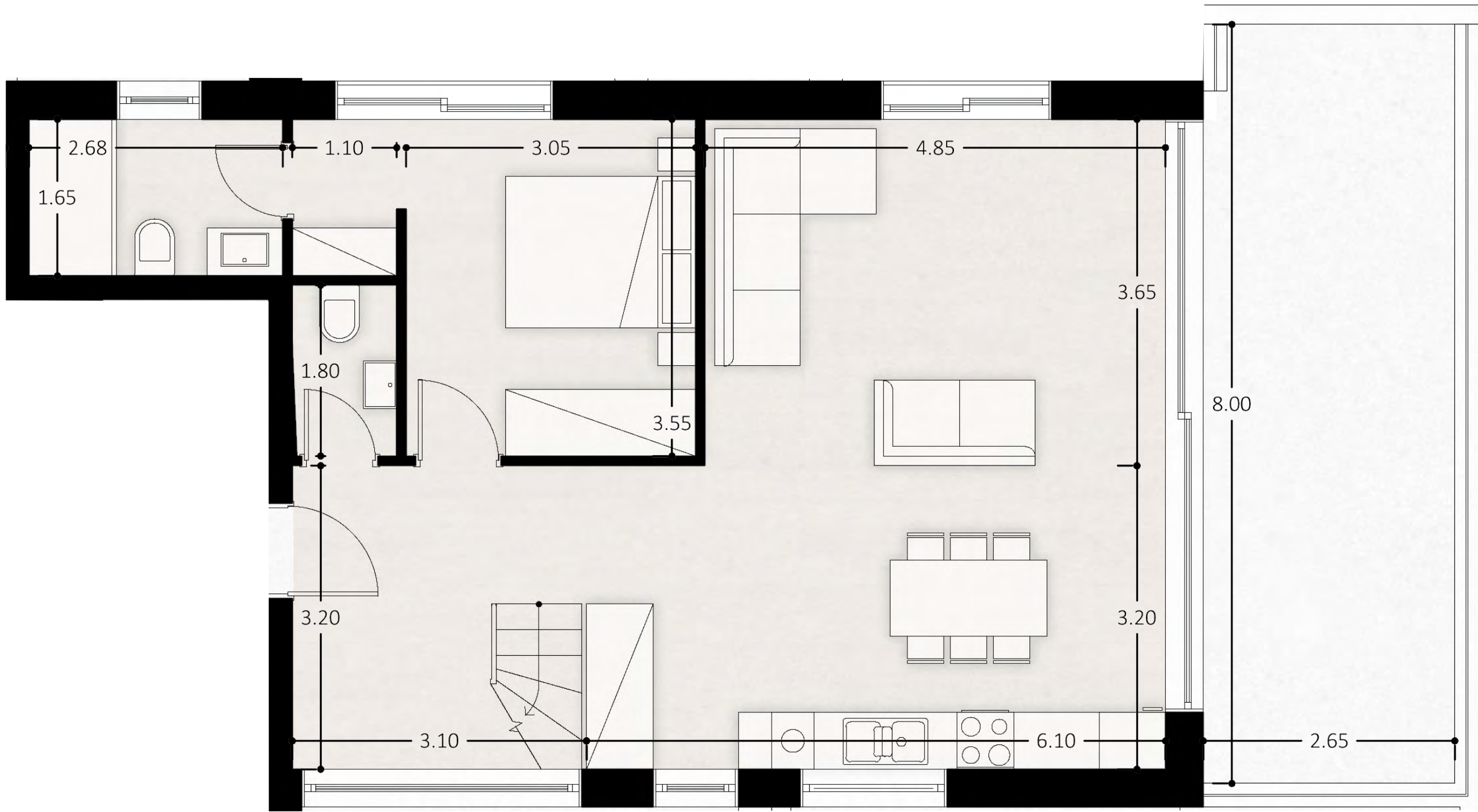
Indoor Spaces	
3 Bedrooms	
2 Bathrooms	
1 Guest WC	
1 Storage room - ΑΠ6	
2 Parking spaces - ΘΣ5 & 5A	

Outdoor Area	
Balcony	50 sqm

NOTE

All of the interior plans and 3D images, consist of indicative information and the project can differ from the display result. The furnishings are only included for illustration purposes. All rights reserved.



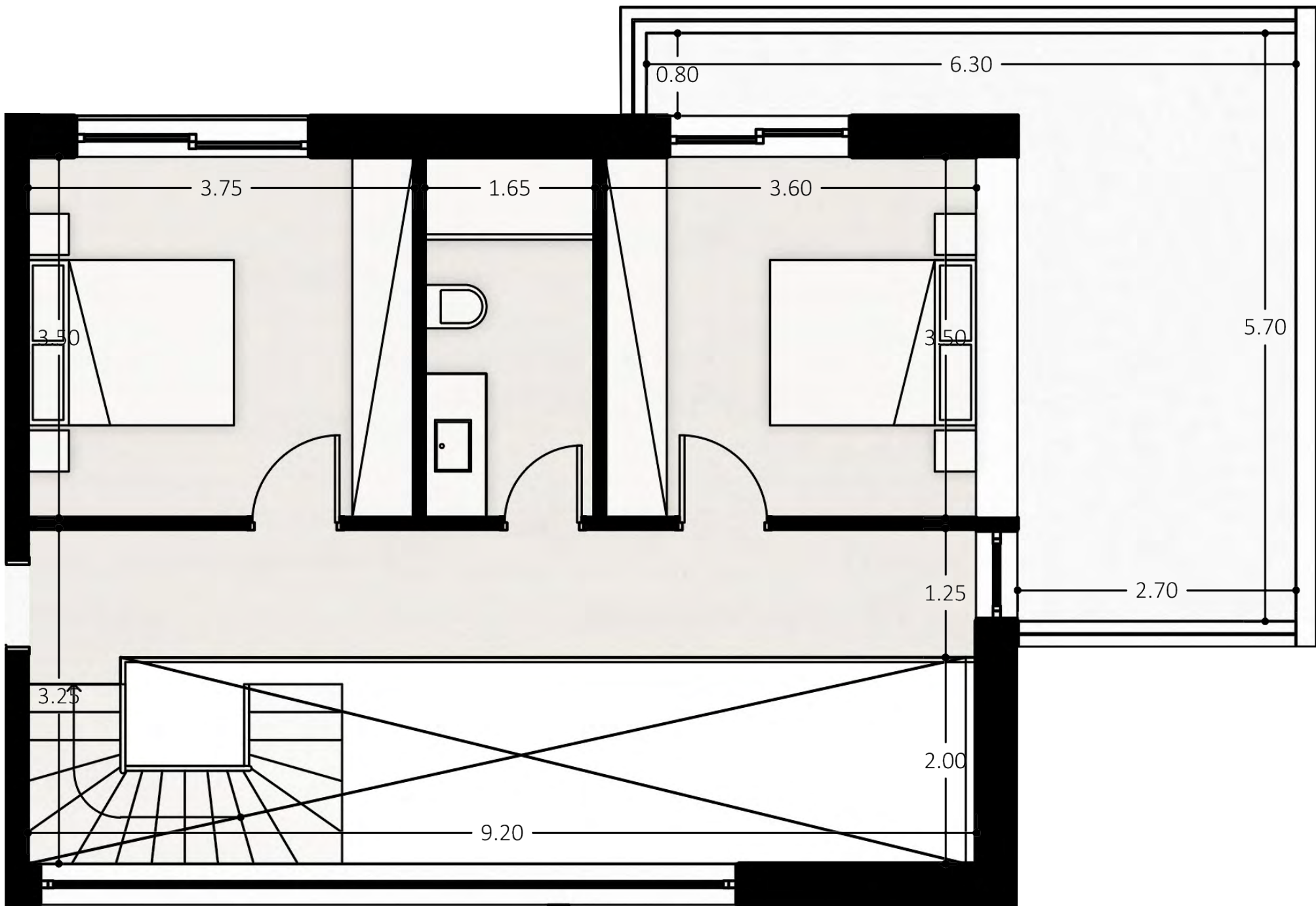


THIRD FLOOR

D2



TOP MAISONETTE



FOURTH FLOOR

Area	138 sqm
Third Floor	81 sqm
Fourth Floor	57 sqm

- Indoor Spaces**
- 2 Bedrooms
  - 2 Bathrooms
  - 1 Guest WC
  - 1 Storage room - ΑΠ7
  - 2 Parking spaces - ΘΣ4 & 4A

Outdoor Area	
Balcony	50 sqm

NOTE

All of the interior plans and 3D images, consist of indicative information and the project can differ from the display result. The furnishings are only included for illustration purposes. All rights reserved.















- Certified high grade concrete
- External themal insulation
- Thermo-switching frames with low-e Crystals
- Fan-coil cooling
- Top choice of air conditioning and heating system with heat pump
- Balcony rails from triplex crystals
- Top-quality waterproofing built-in shower set with removable head plate
- Photovoltaic panels
- Infrastructure for Alarm system
- Half-timbered oak floors
- High quality ceramic tiles for indoor and outdoor use
- Safety doors
- Wardrobes and kitchens from laquer, natural wood veneer
- Private parking and storage spaces

NOTE Movable furniture, home appliances and interior items are extras

A++







#### **GREECE OFFICE**

38 Leof. Vasileos Konstantinou  
Pagrati | 116 35 Athens

**M** + 30 693 686 5200

**T** + 30 210 440 9111

**W** [www.livhomes.gr](http://www.livhomes.gr)

#### **LEBANON OFFICE**

The Bridge Center | 5th floor  
Saloumeh | Sin El Fil

**M** + 961 81 666 708

**T** + 961 1 492 489

**E** [hello@livhomes.gr](mailto:hello@livhomes.gr)