



starting from **250.000€**

ATHENS PERISTERI PROJECT

Delivery Date:
September 2026





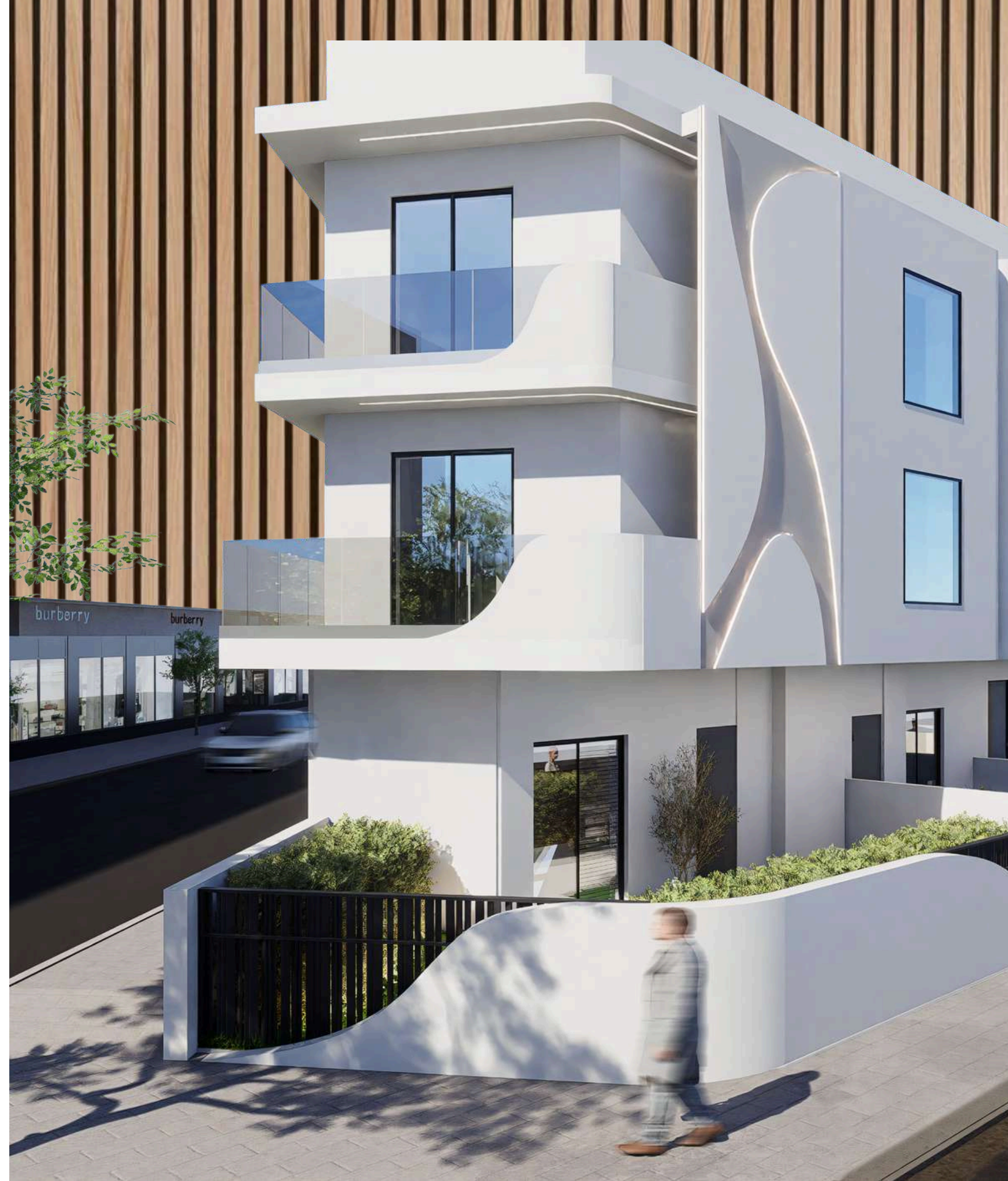
4 level Building

16 apartments

5 maisonettes

28-63m²

Apartment sizes range



Quality & Amenities



Energy Class A



Heating - Cooling with Fan Coil units combined with Heat Pump and Solar water heater



Thermal break aluminium frames with double glass



External wall thermal insulation 10cm



Exclusive use of yard for ground floor apartments



Fully furnished apartments



Refrigerator, oven, hob, washing machine, TV included.



Interior Lighting Planning & Design



Curtains, soft furnishings, and decorative items in all rooms



Gym Area for the residents in the Semi-Basement

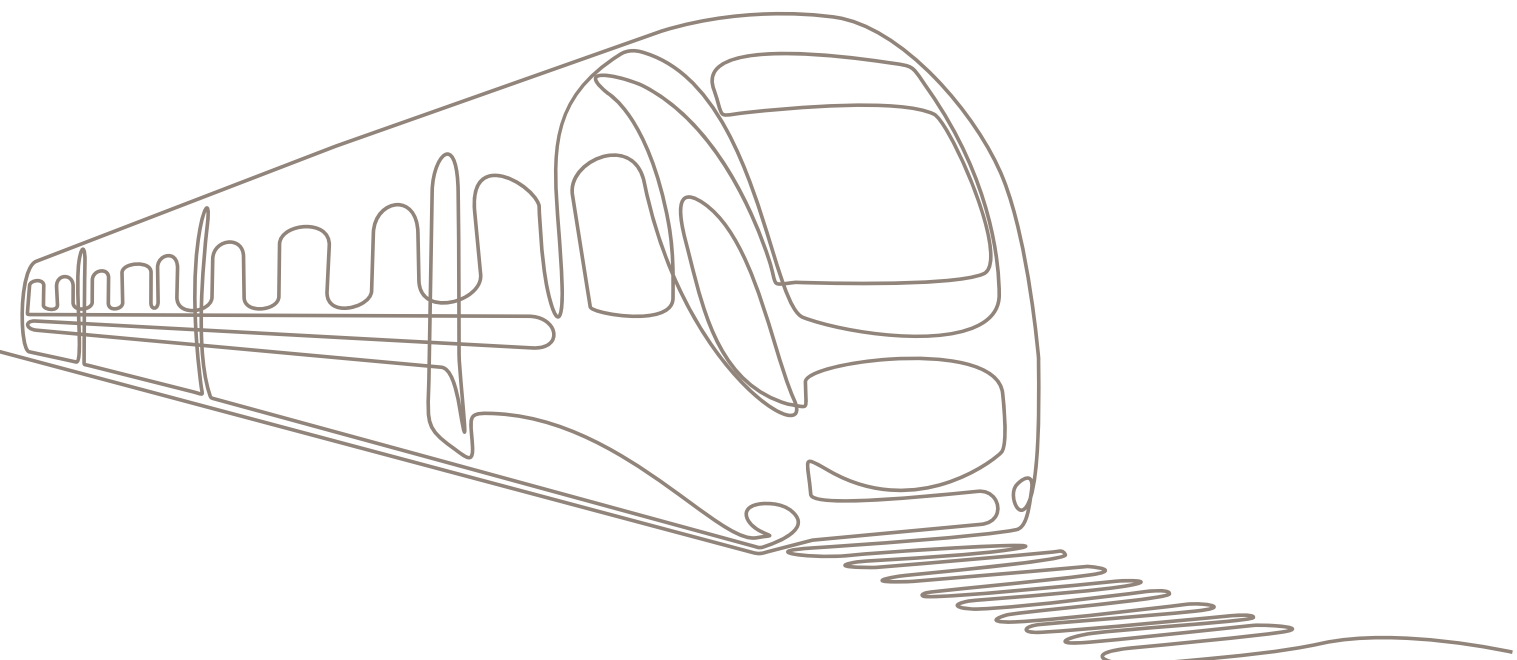


Peristeri is a vibrant and rapidly growing district located just a few kilometers northwest of central Athens. Known for its welcoming community, Peristeri offers a mix of urban conveniences and suburban tranquility.

With excellent public transport links, including 3 metro stations, residents can easily access the city center and other key areas of Athens.



Piraeus



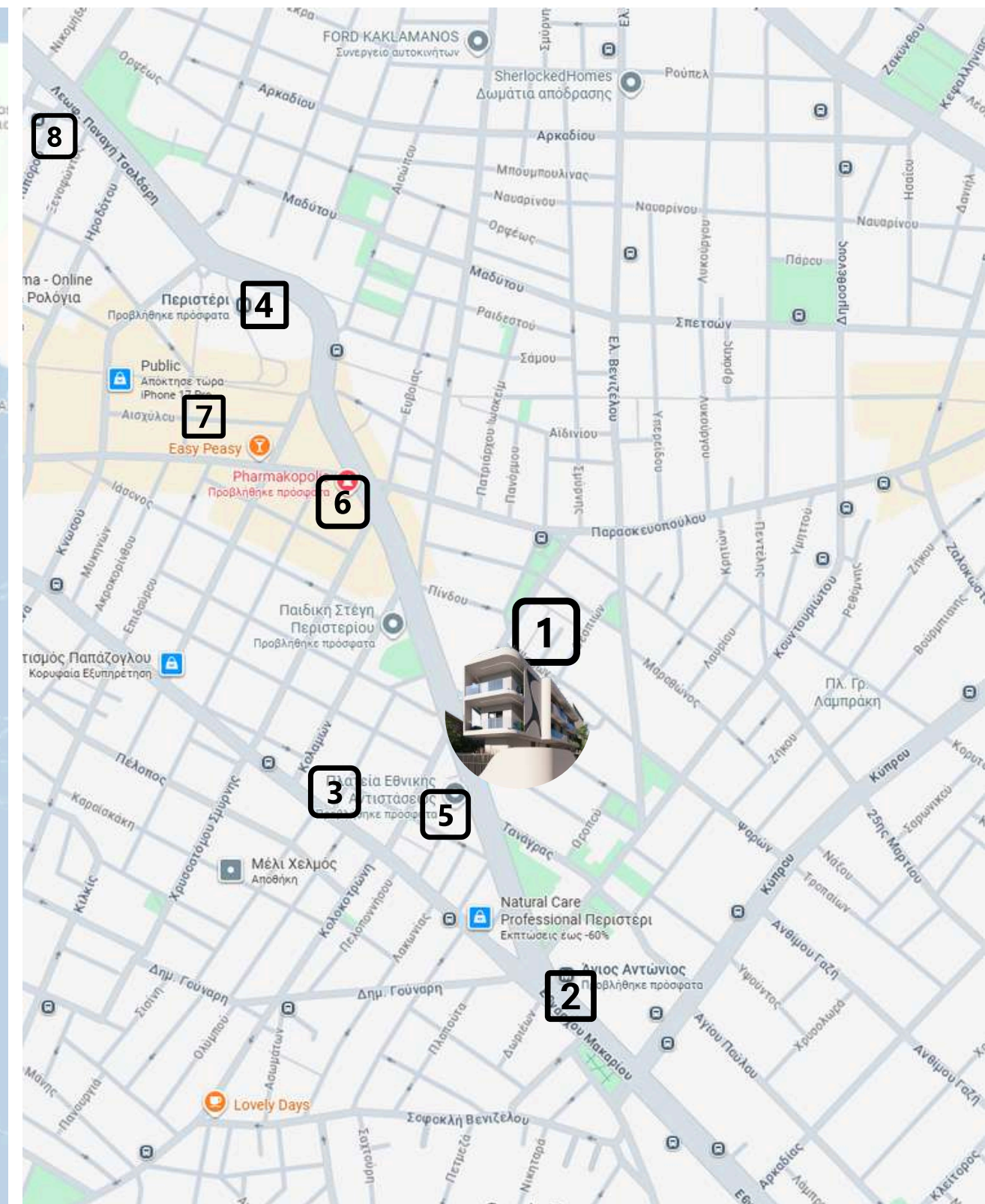
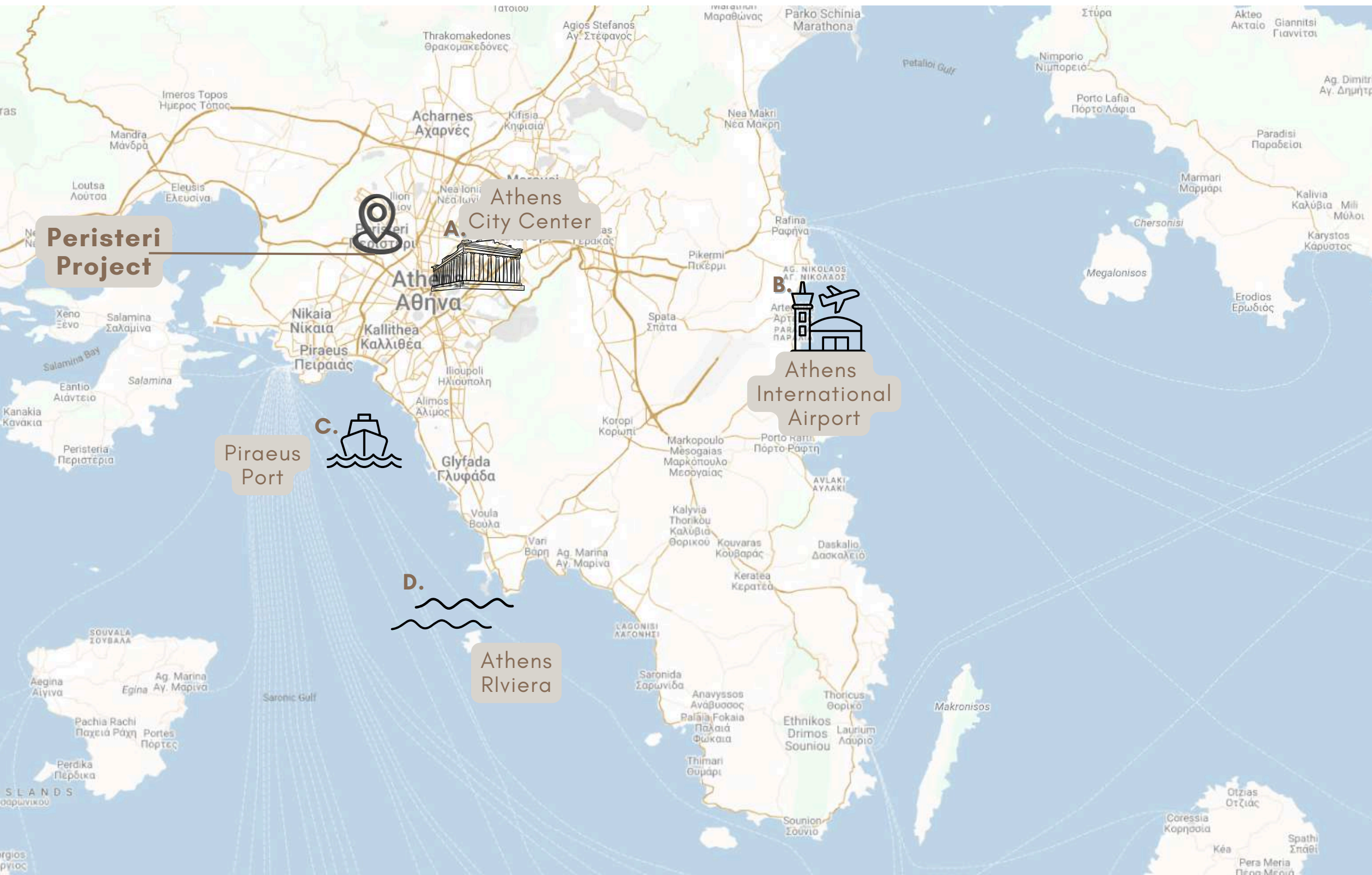
Peristeri Project



Airport

ATHENS Metro Projects

- under construction
- Extensions planned
- OSE National Railways
- Tram lines



LOCATION

- 1. **Peristeri Project**
- 2. Metro Station - 190m
- 3. Supermarket - 290m
- 4. Metro Station - 400km

- 5. Park - 70m
- 6. Pharmacy - 350m
- 7. Commercial Area- 400m
- 8. Health Center - 150m

- A. Athens City Center → 15 mins
- B. Athens Internation Airport → 25 mins
- C. Piraeus Port → 15 min
- D. Athens Riviera → 10 mins

A GLIMPSE OF WHAT'S COMING

This aerial view captures the true essence of the location, while the integrated 3D render reveals exactly how your future home will sit within the landscape

A perfect blend of location, design, and vision presented in one image.



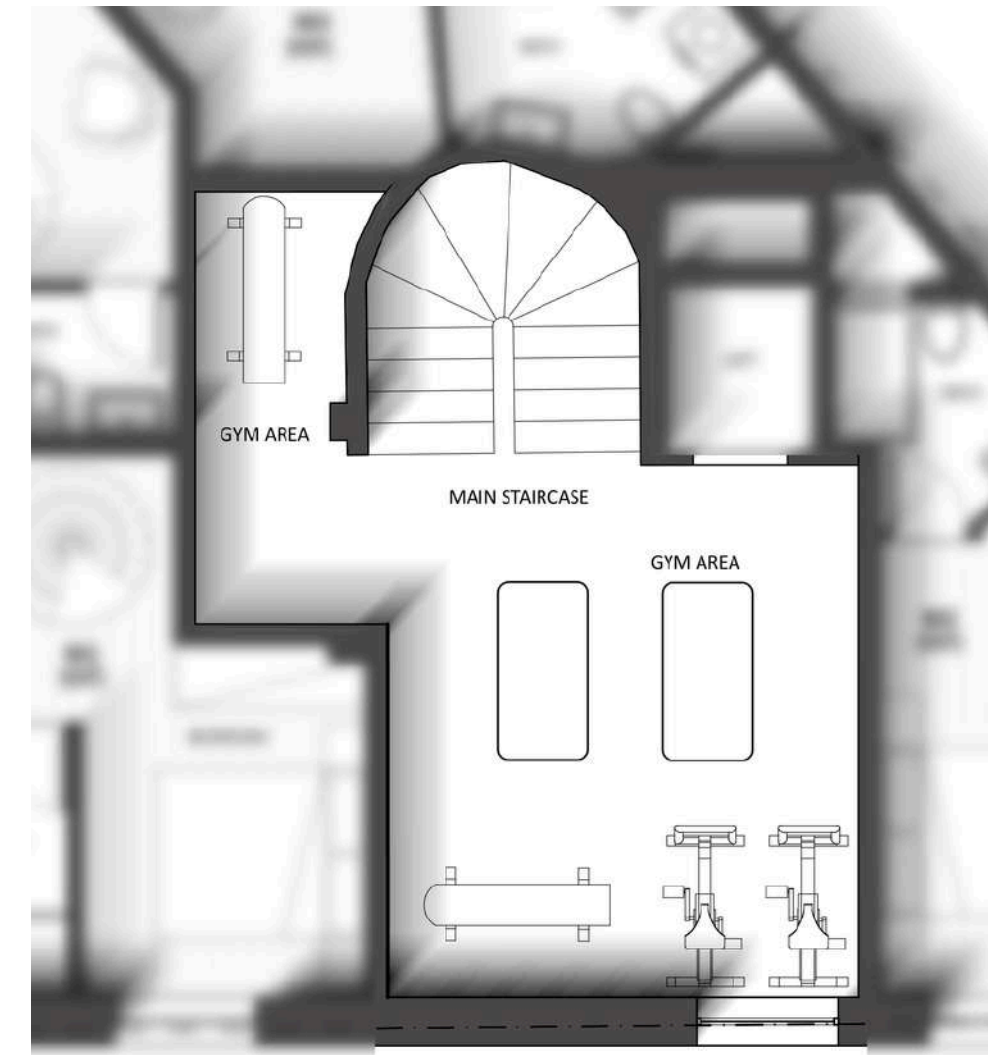
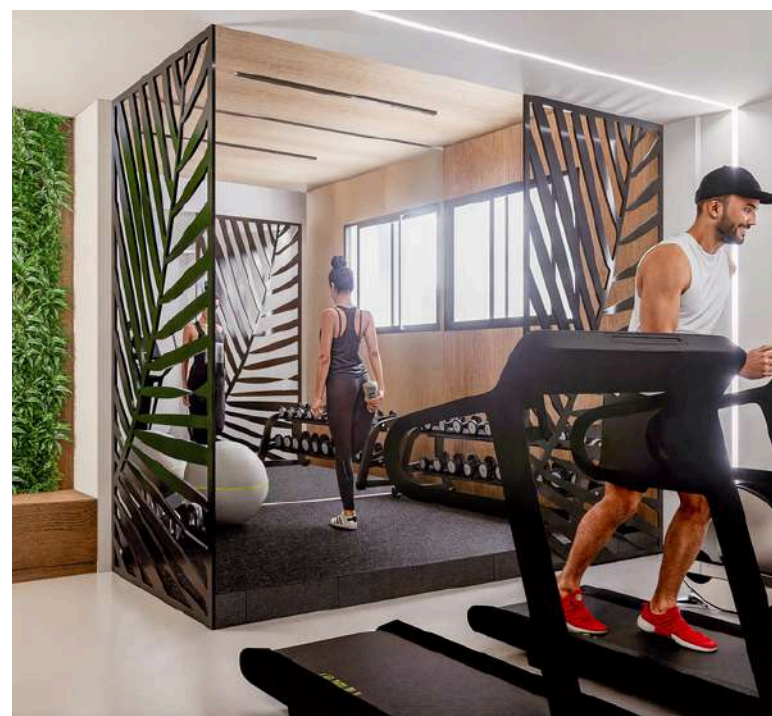
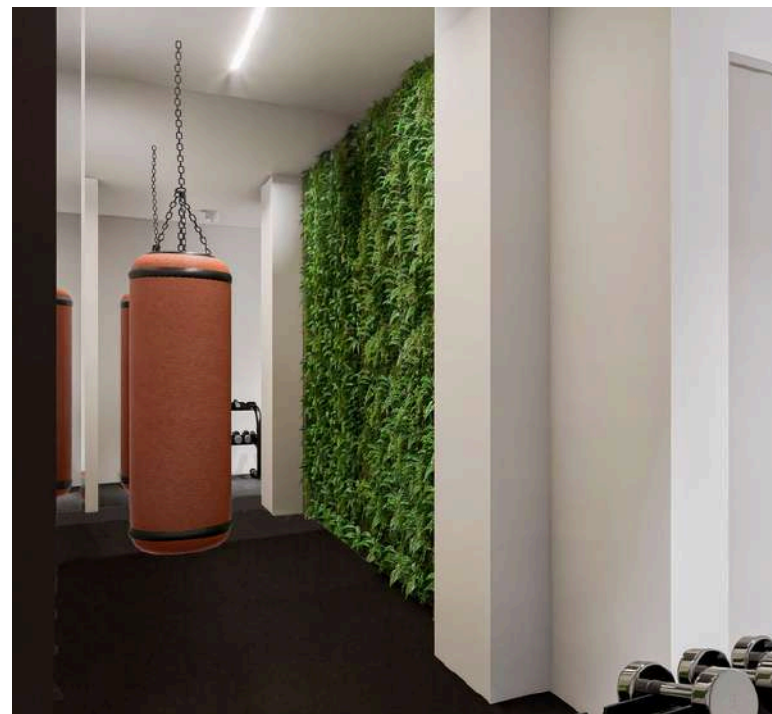
DISCOVER THE JOY OF LIVING WITH YOUR OWN PRIVATE COURTYARD

DESIGNED TO ELEVATE YOUR EVERYDAY LIFE.



The spacious courtyard, a peaceful retreat where you can enjoy your morning coffee, entertain friends, or simply relax under the open sky. Surrounded by natural light, it creates a warm, inviting atmosphere that brings comfort and serenity to your living experience.

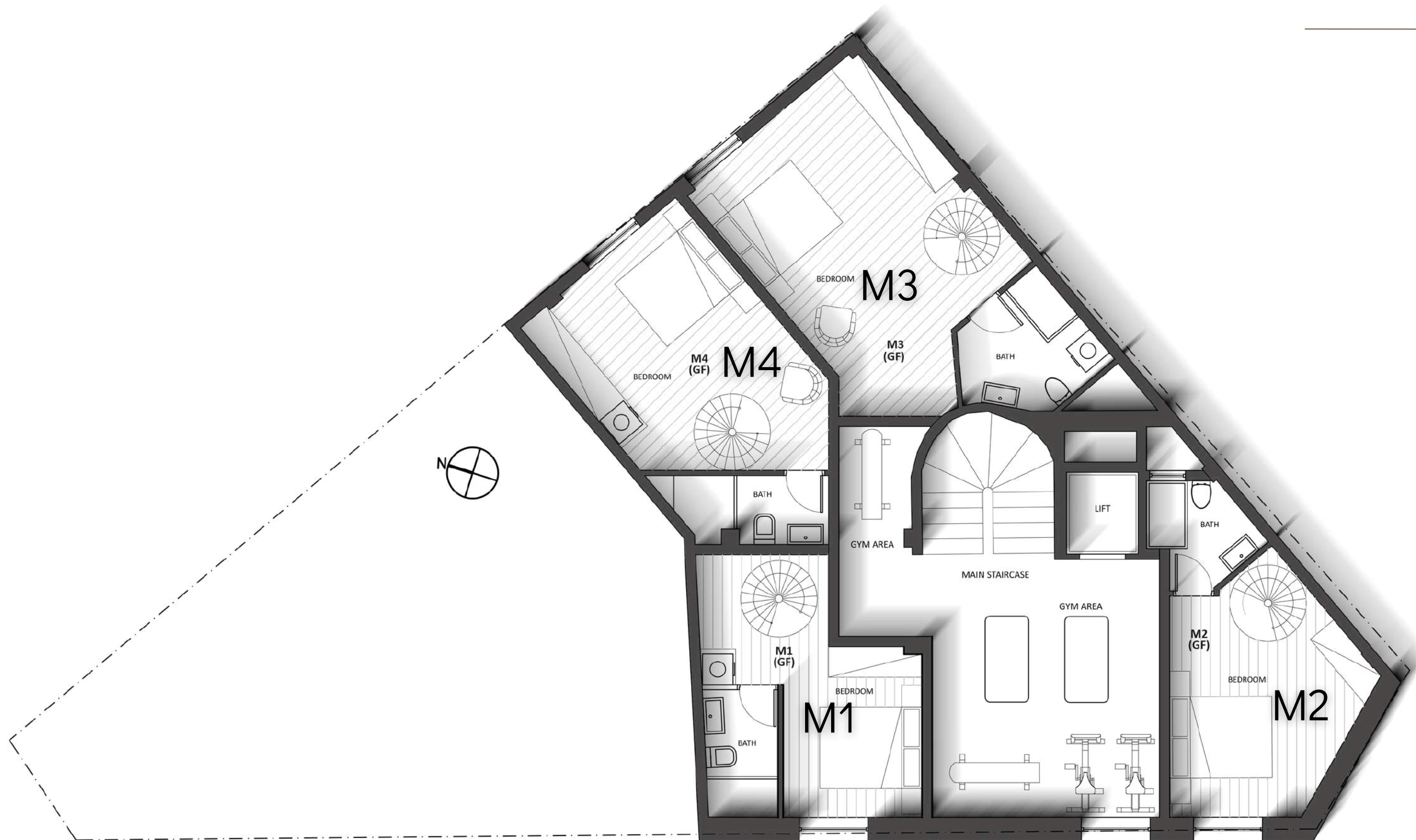
Whether you're looking for a place to host gatherings, create a personal garden, or give children and pets room to play, this outdoor area adds exceptional value and charm. It transforms each apartment into a home with character.



Enjoy the luxury of a fully equipped fitness center right inside your building. The bright, inviting atmosphere will make it easy to stay active every day.

No memberships, no commute—just premium wellness at your doorstep.

SEMI BASEMENT



MAIS 1 maisonette

46m² (299.000€)

22.5m² @ SB

23.5m² @ SF

24m² excl. use of yard @ SF

MAIS 2 maisonette

57m² SOLD

24m² @ SB

33m² @ SF

24m² excl. use of yard @ SF

MAIS 3 maisonette

61m² (300.000€)

35m² @ SB

26m² @ SF

4m² balcony @ SF

MAIS 4 maisonette

47.5m² (270.000€)

27,5m² @ SB

20m² @ SF

4m² balcony @ SF

SEMI FLOOR

SEMI 1 apartment

49m² (SOLD)

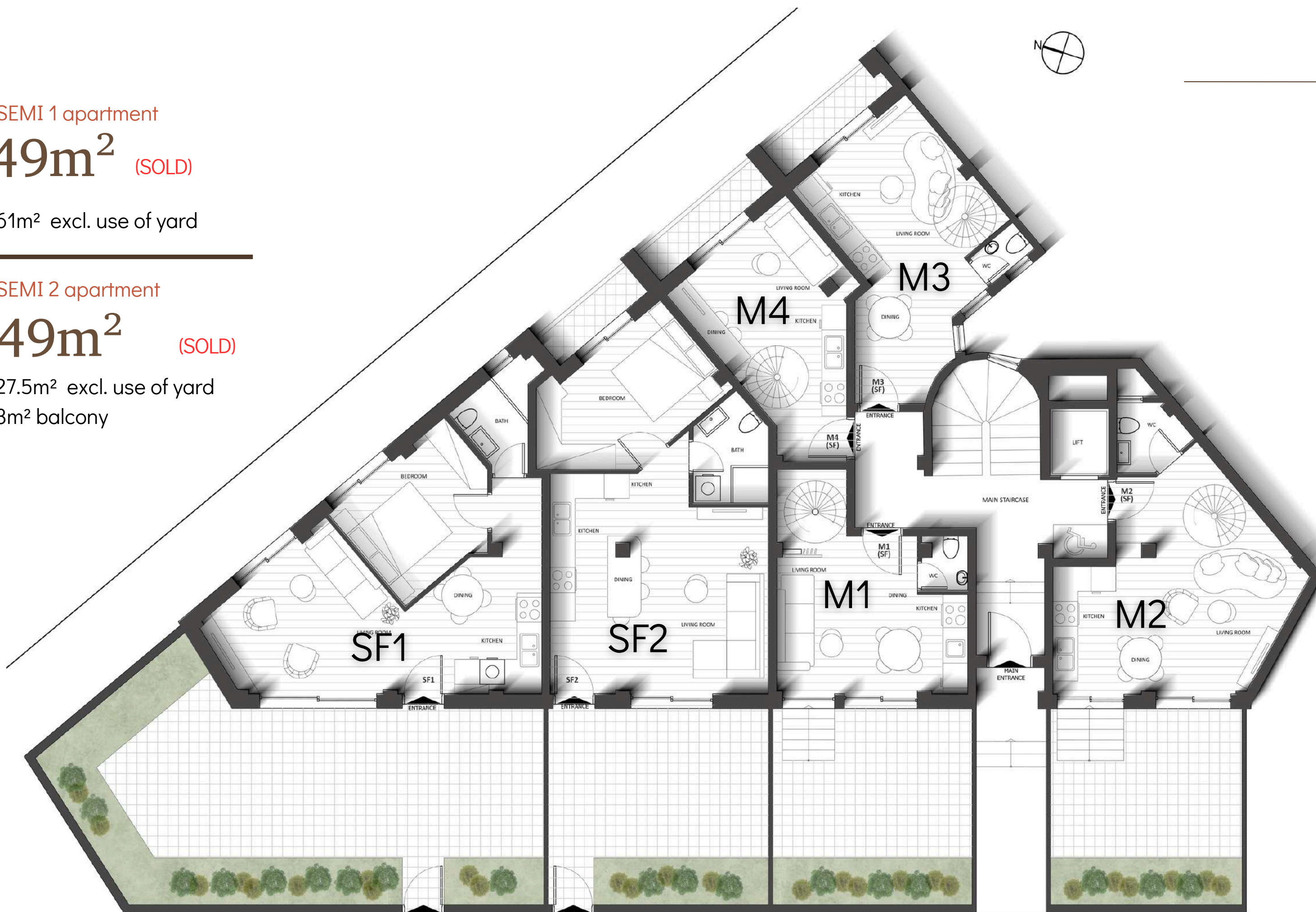
61m² excl. use of yard

SEMI 2 apartment

49m² (SOLD)

27.5m² excl. use of yard

3m² balcony



MAIS 1 maisonette

46m² (299.000€)

22.5m² @ SB

23.5m² @ SF

24m² excl. use of yard @ SF

MAIS 2 maisonette

57m² SOLD

24m² @ SB

33m² @ SF

24m² excl. use of yard @ SF

MAIS 3 maisonette

61m² (300.000€)

35m² @ SB

26m² @ SF

4m² balcony @ SF

MAIS 4 maisonette

47.5m² (270.000€)

27.5m² @ SB

20m² @ SF

4m² balcony @ SF

A' FLOOR

MAIS 5 maisonette

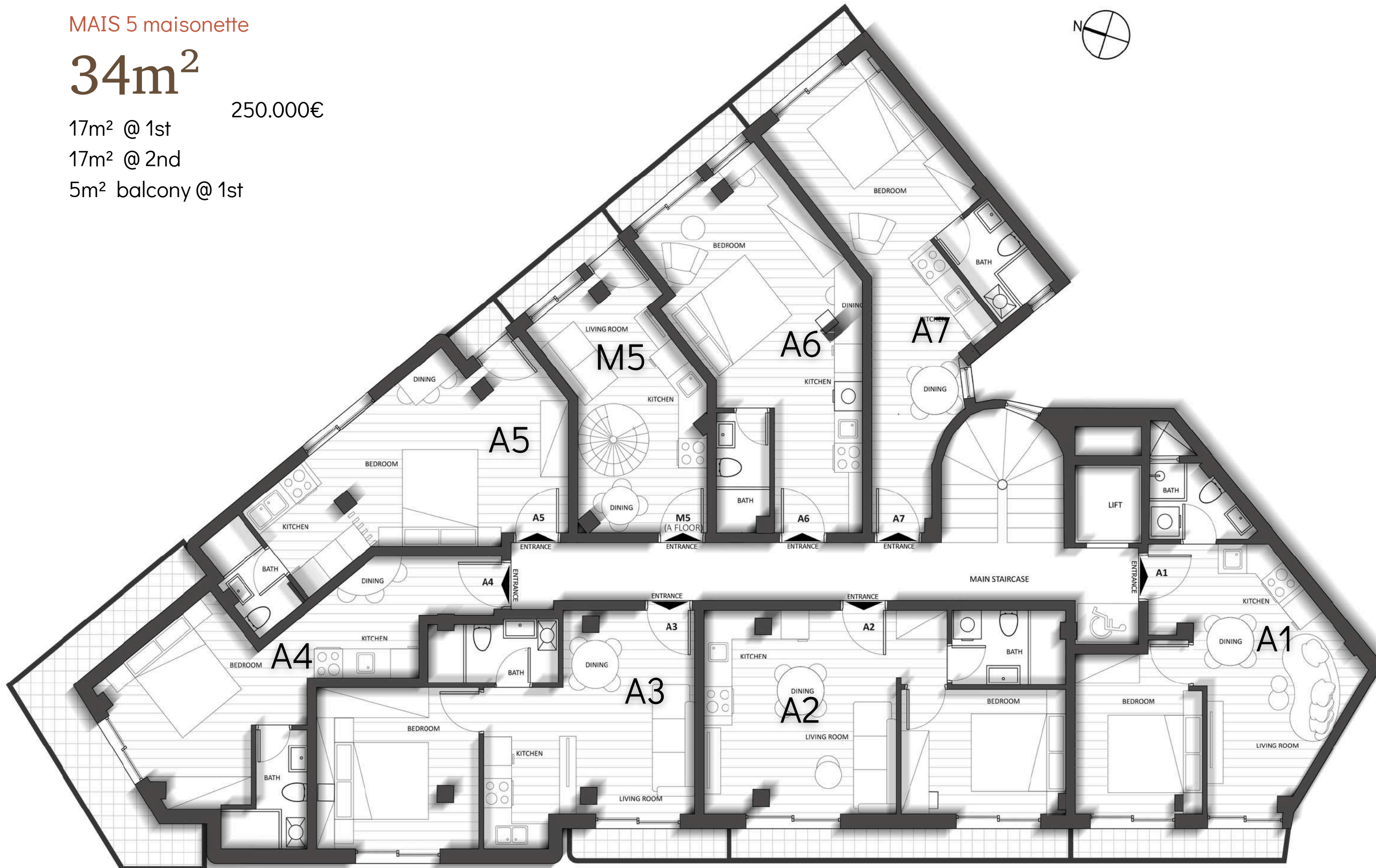
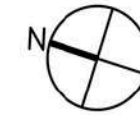
34m²

250.000€

17m² @ 1st

17m² @ 2nd

5m² balcony @ 1st



A1 apartment

34.5m² (SOLD)

4m² balcony

A2 apartment

37m² (SOLD)

6m² balcony

A3 apartment

38m² (SOLD)

3m² balcony

A4 apartment

28.5m² (SOLD)

11 m² balcony

A5 apartment

28m² (RESERVED)

1m² balcony

A6 apartment

28.5m² (SOLD)

3m² balcony

A7 apartment

30m² (SOLD)

3m² balcony

MAIS 5 maisonette

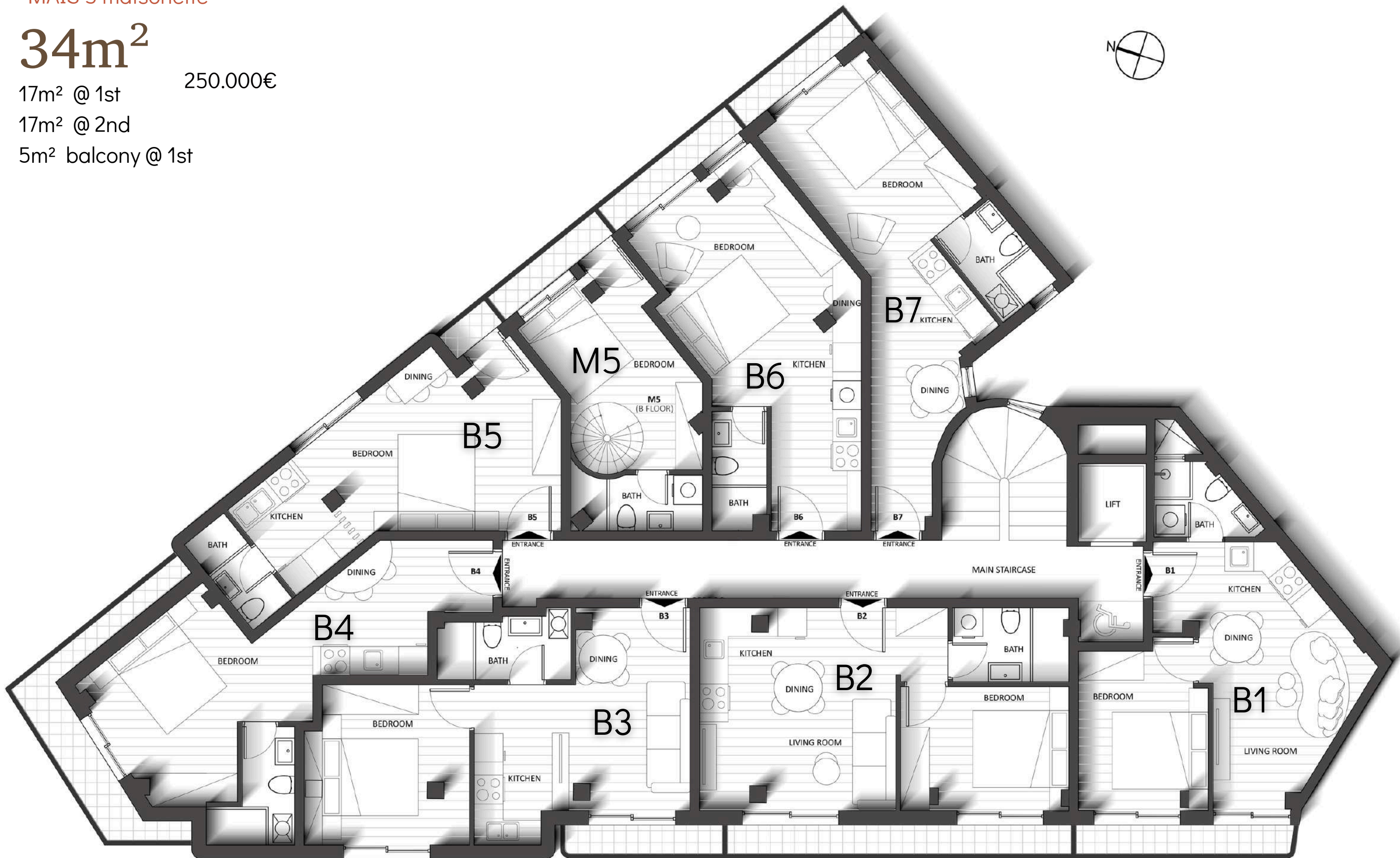
34m²

17m² @ 1st

250.000€

17m² @ 2nd

5m² balcony @ 1st



B' FLOOR

B1 apartment

35m² (SOLD)

4m² balcony

B2 apartment

37m² (SOLD)

6m² balcony

B3 apartment

37m² (SOLD)

3m² balcony

B4 apartment

30.5m² (SOLD)

8m² balcony

B5 apartment

27m² (250.000€)

1m² balcony

B6 apartment

28.5m² (SOLD)

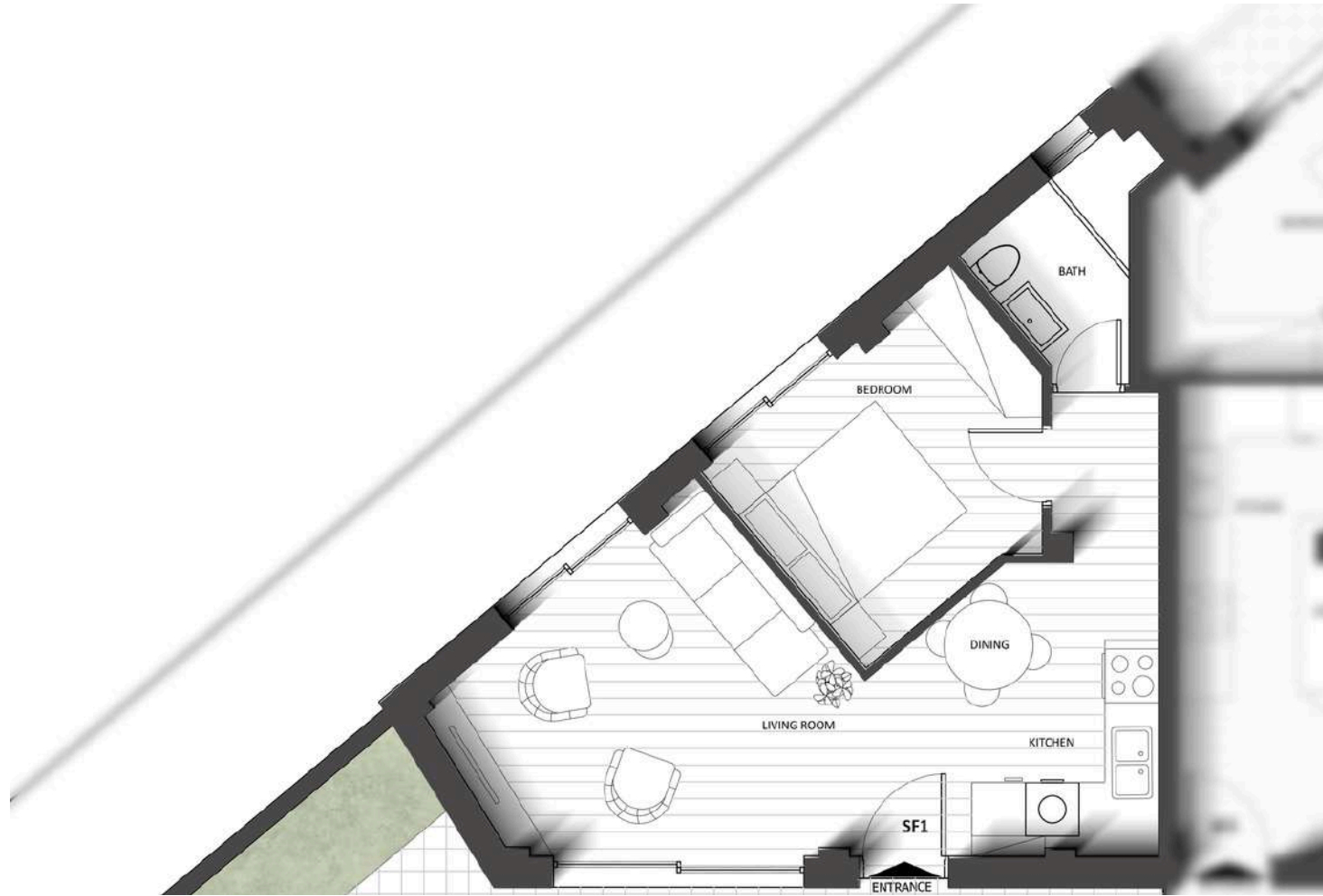
3m² balcony

B7 apartment

30m² (SOLD)

3m² balcony

Semi- Floor



SEMI 1

49m² | 61m² excl. use of yard



SOLD



Semi- Floor



SEMI 2

49m² | 27.5m² excl. use of yard | 3m² balcony

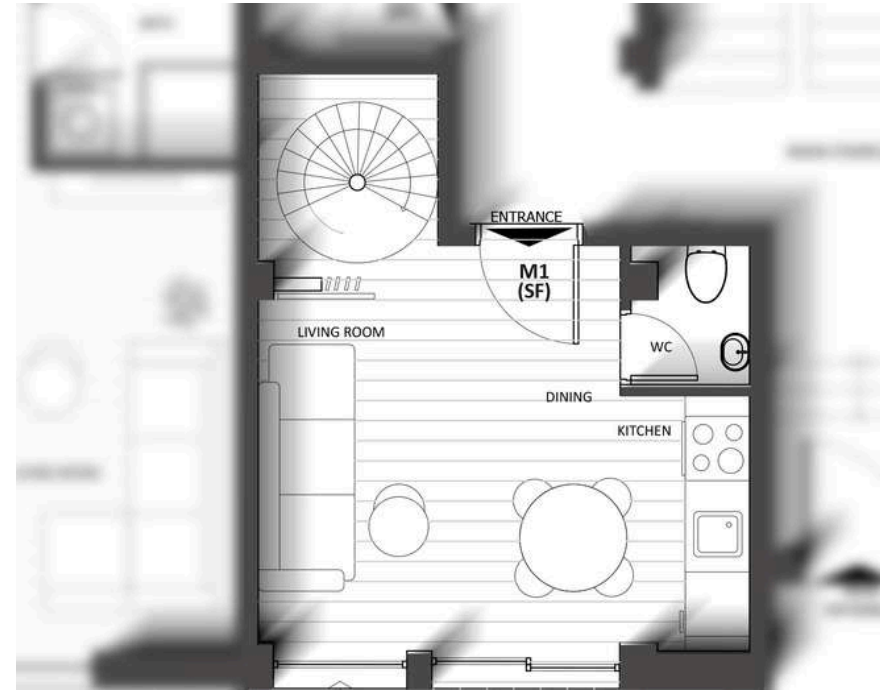
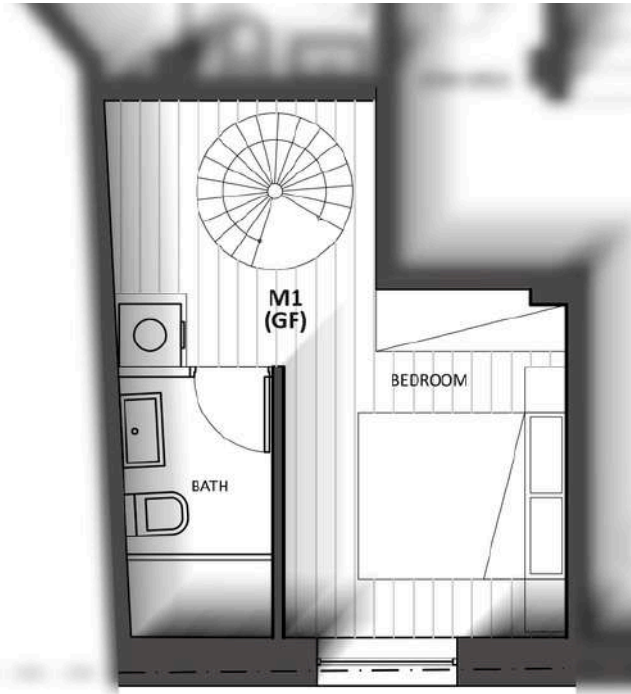


SOLD



Semi- Basement

Semi- Floor



MAIS 1

46m² | 24m² excl. use of yard

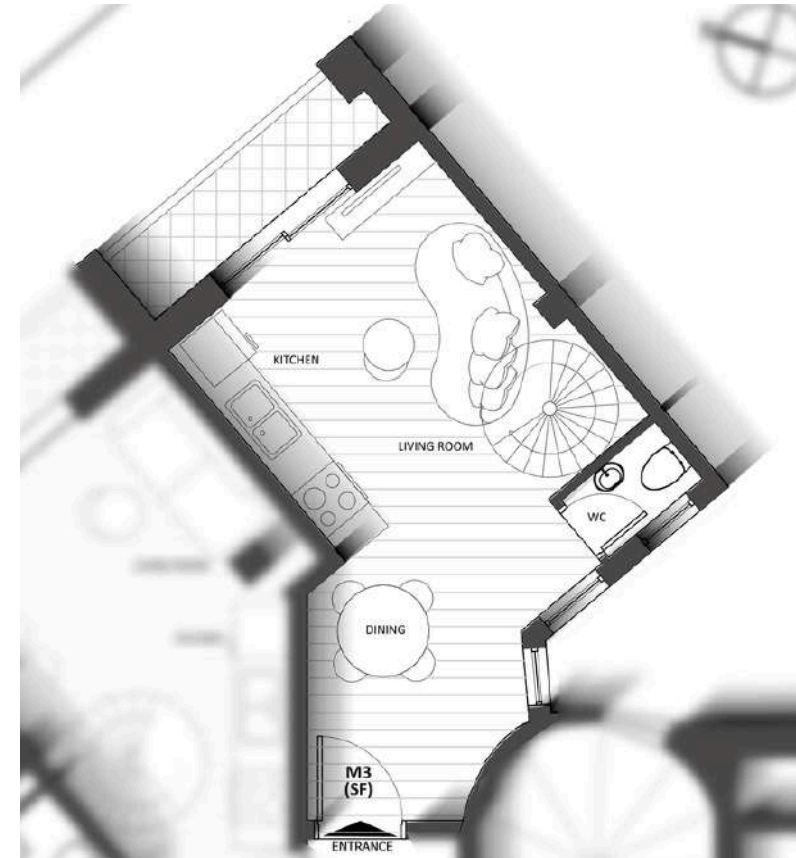


299.000€



Semi- Basement

Semi- Floor



MAIS 3

61m² | 4m² balcony

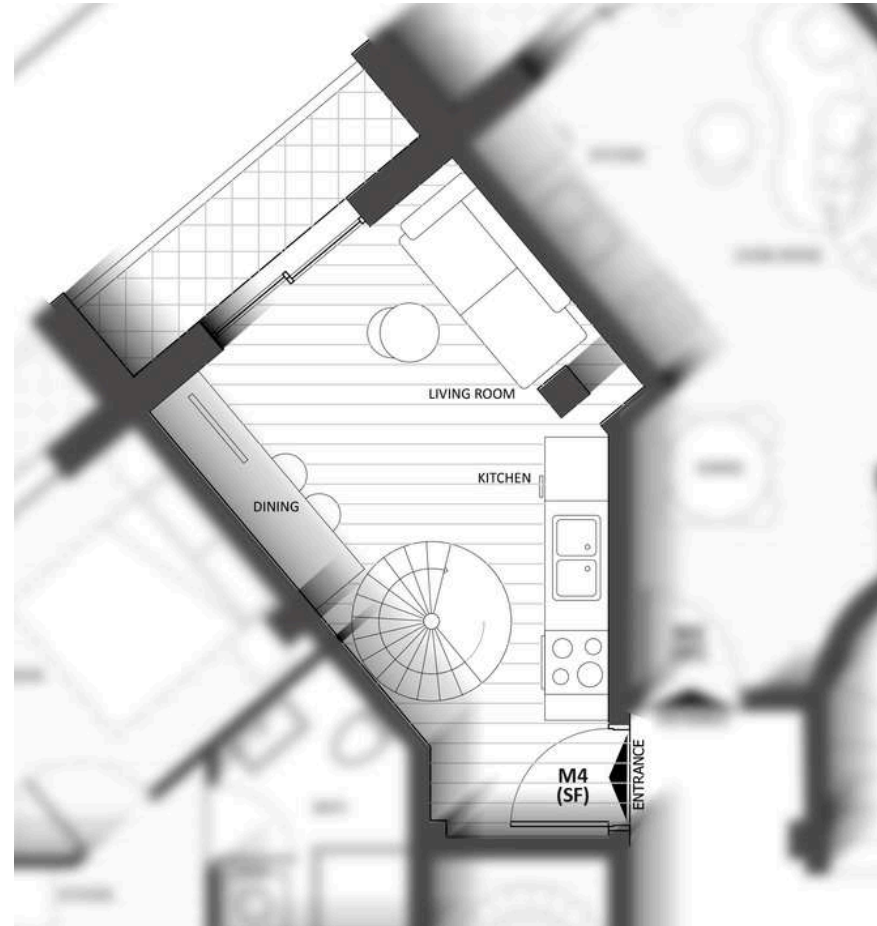
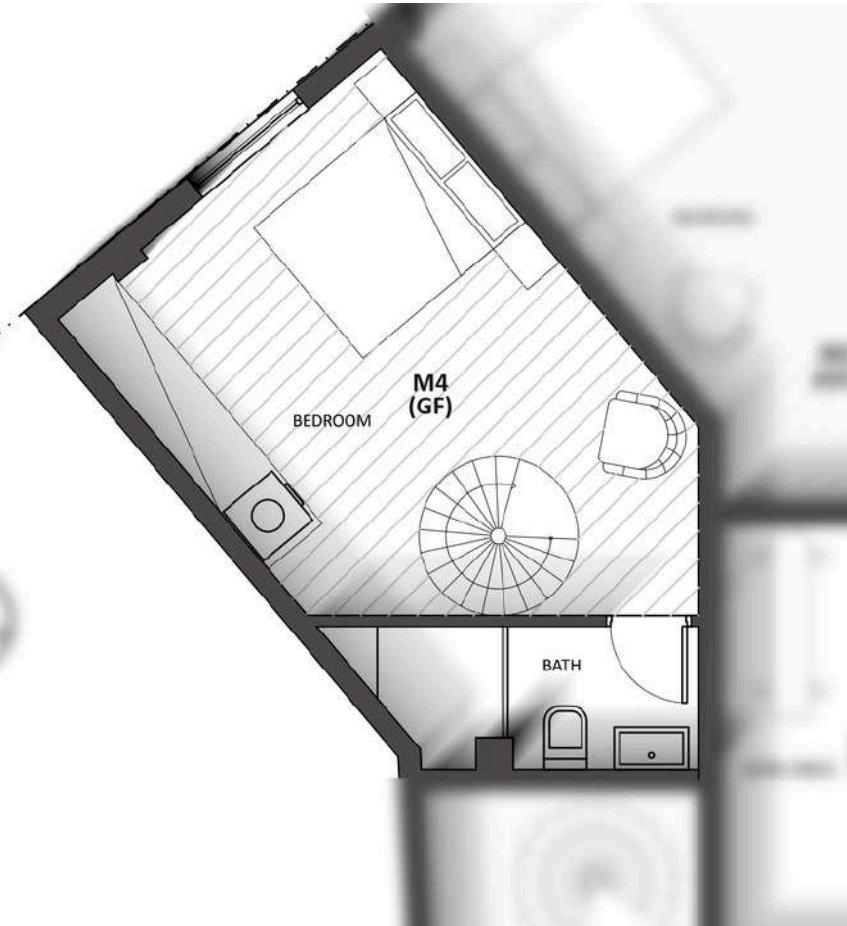


300.000€



Semi- Basement

Semi- Floor



MAIS 4

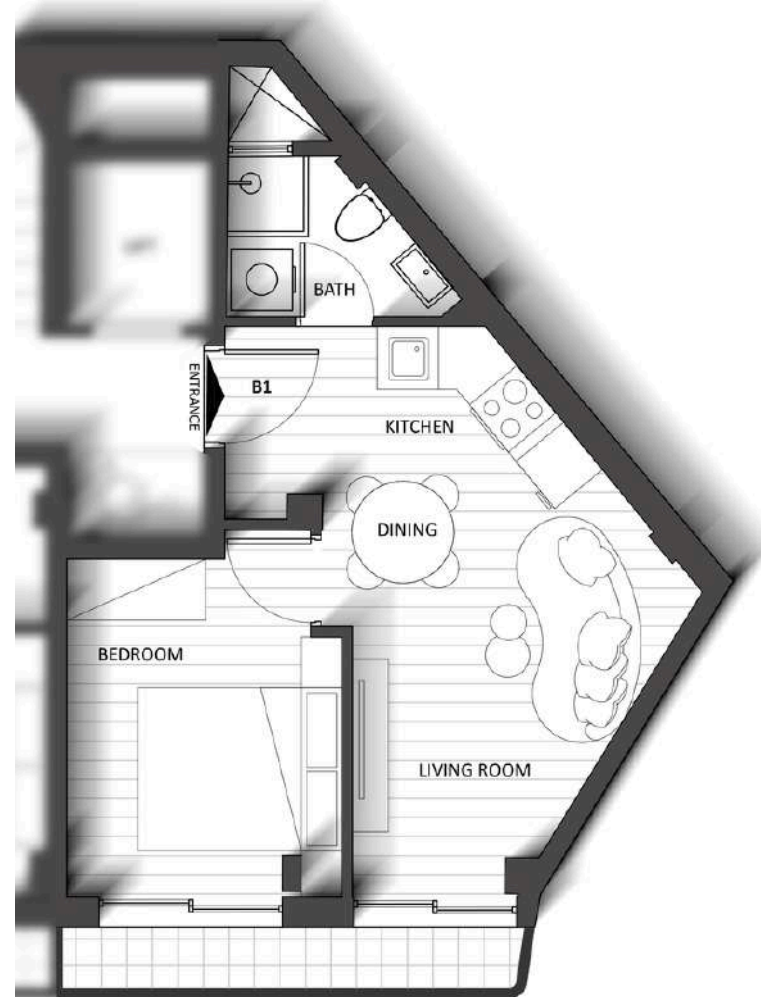
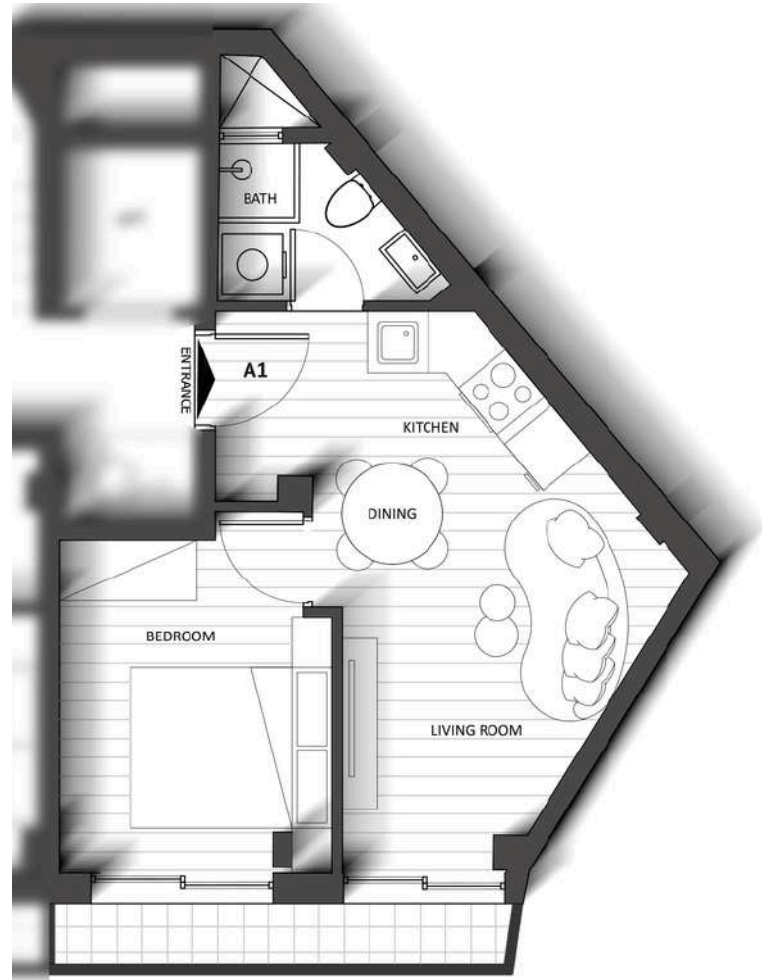
47.5m² | 4m² balcony



270.000€



A' Floor / B' Floor



A1

SOLD

34.5m² | 4m² balcony

1



1



B1

SOLD

35m² | 4m² balcony

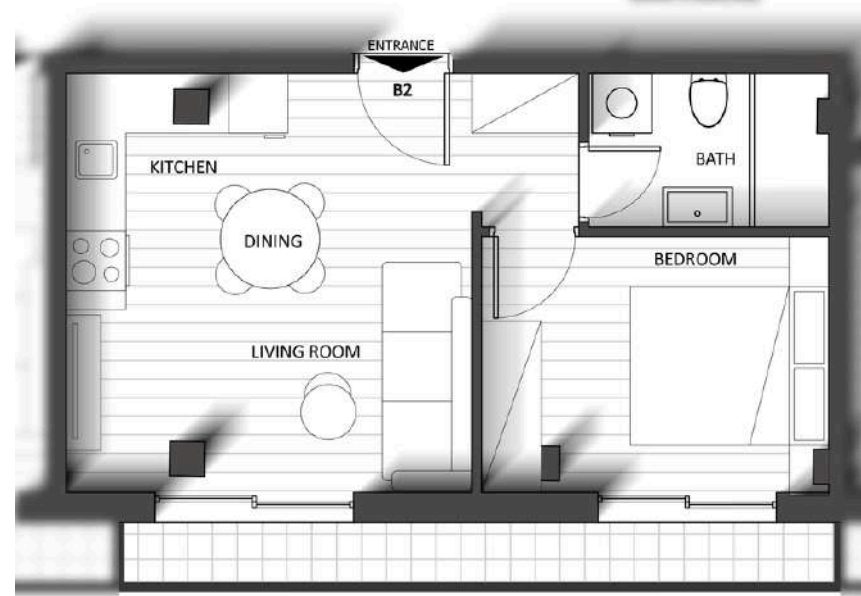
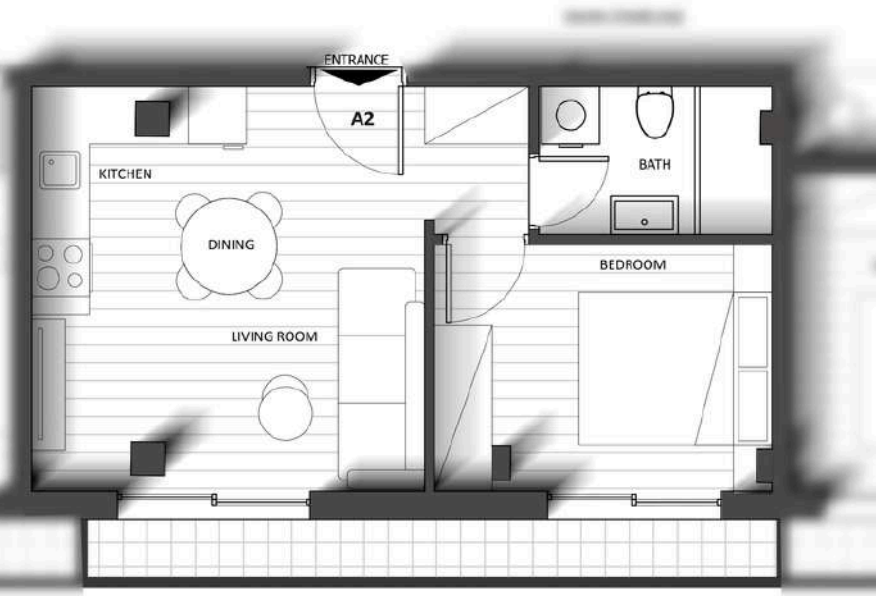
1



1



A' Floor / B' Floor



A2

SOLD

37m² | 6m² balcony



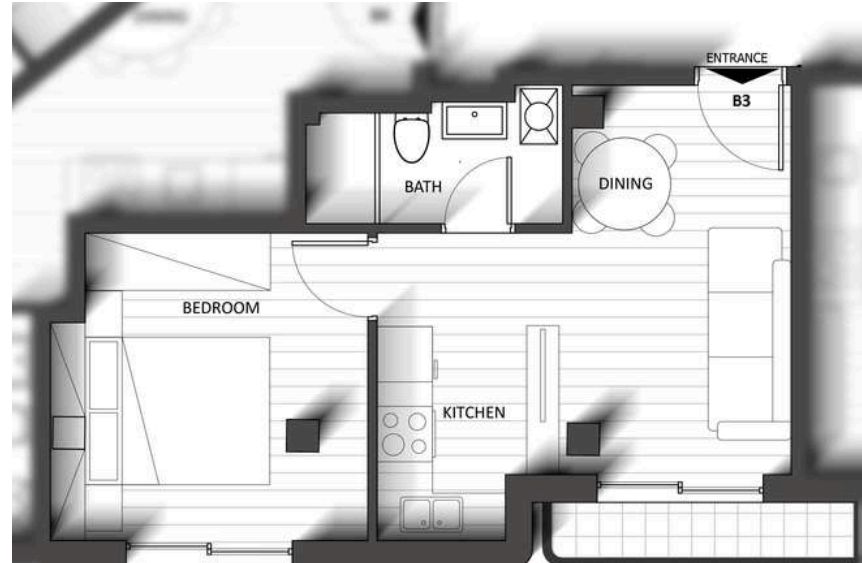
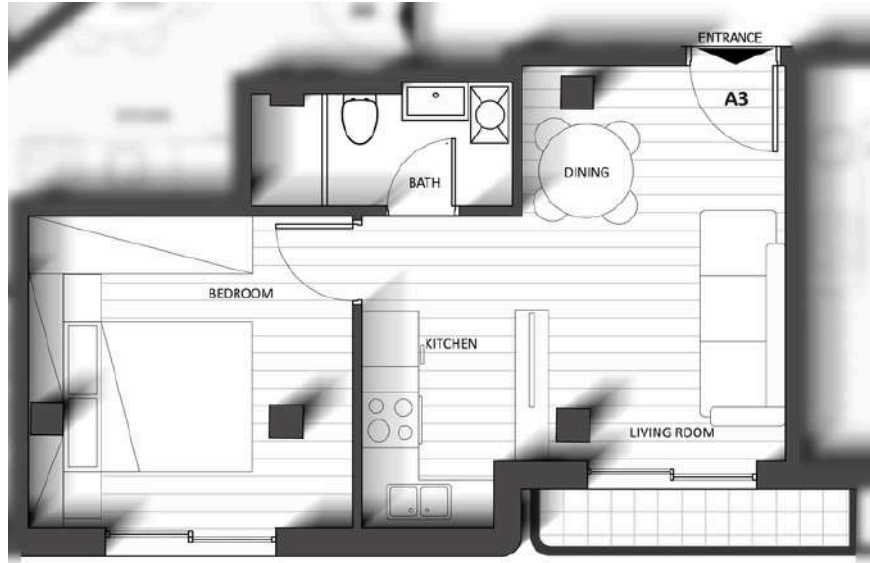
B2

SOLD

37m² | 6m² balcony



A' Floor / B' Floor



A3

SOLD

38m² | 3m² balcony



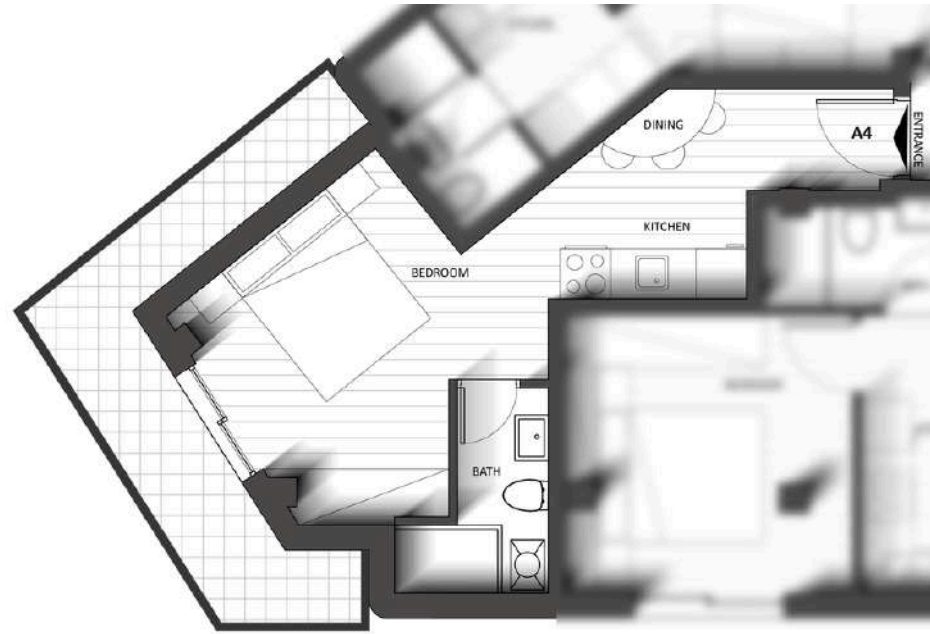
B3

SOLD

37m² | 3m² balcony



A' Floor / B' Floor



A4

SOLD

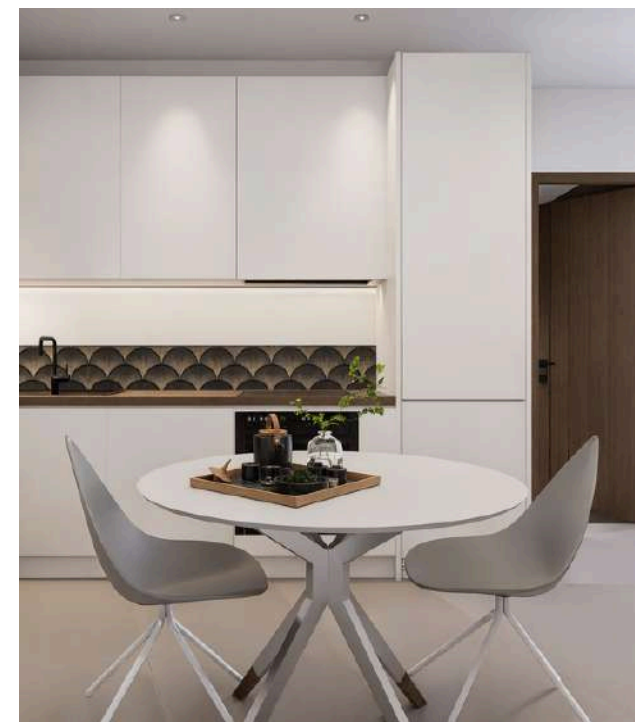
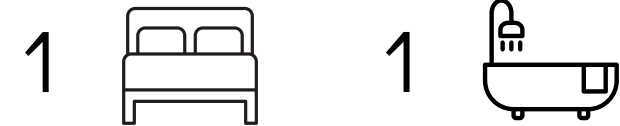
28.5m² | 11m² balcony



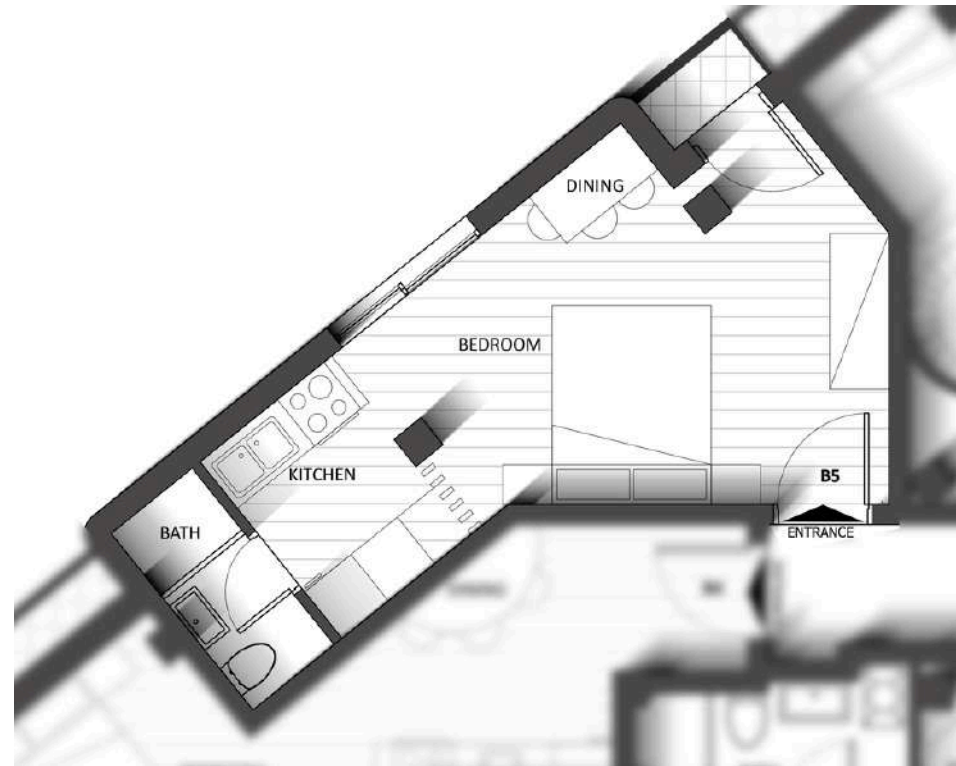
B4

SOLD

30.5m² | 8m² balcony



A' Floor / B' Floor



A5

RESERVED

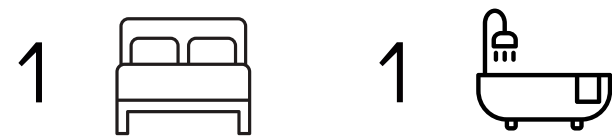
28m² | 1m² balcony



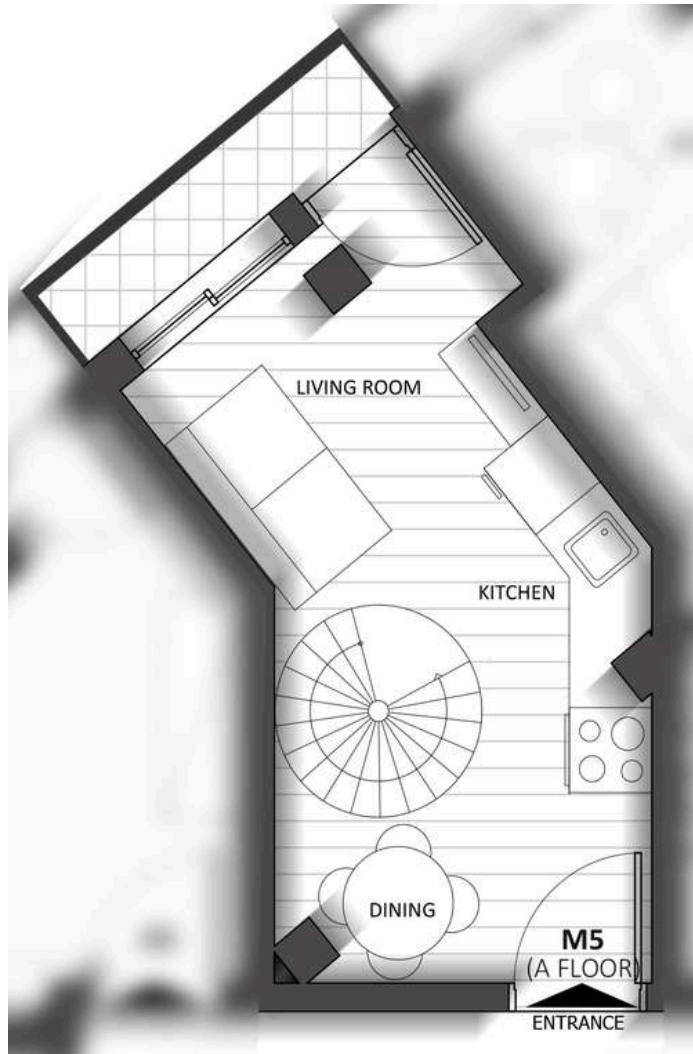
B5

250.000€

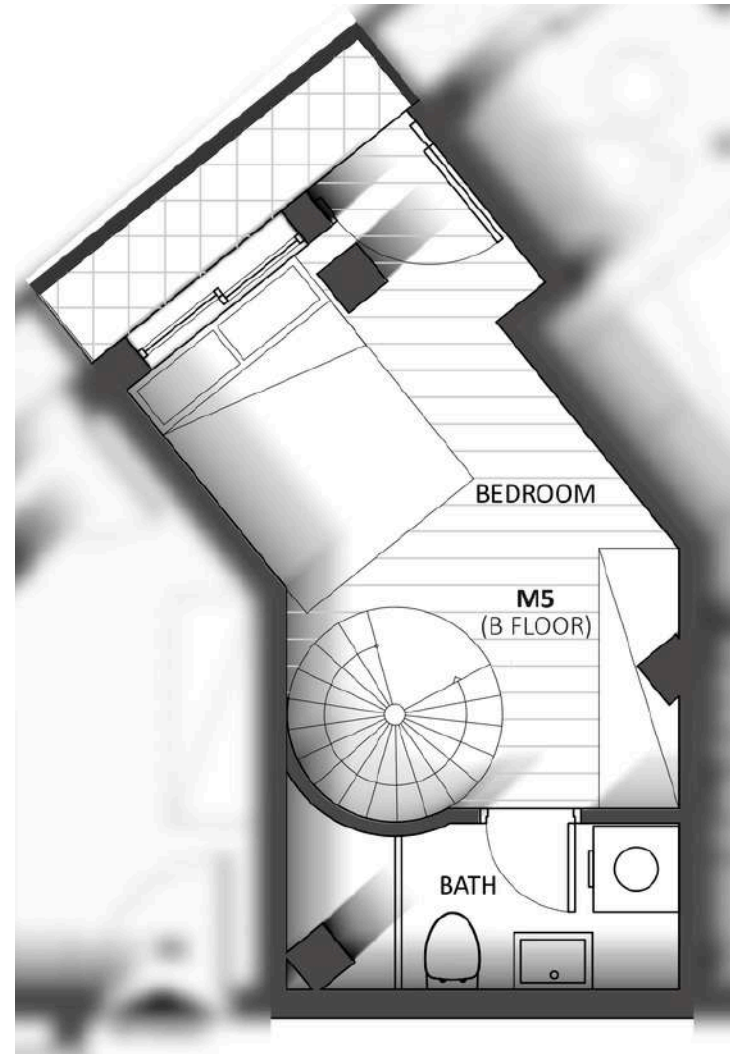
27m² | 1m² balcony



A' Floor



B' Floor

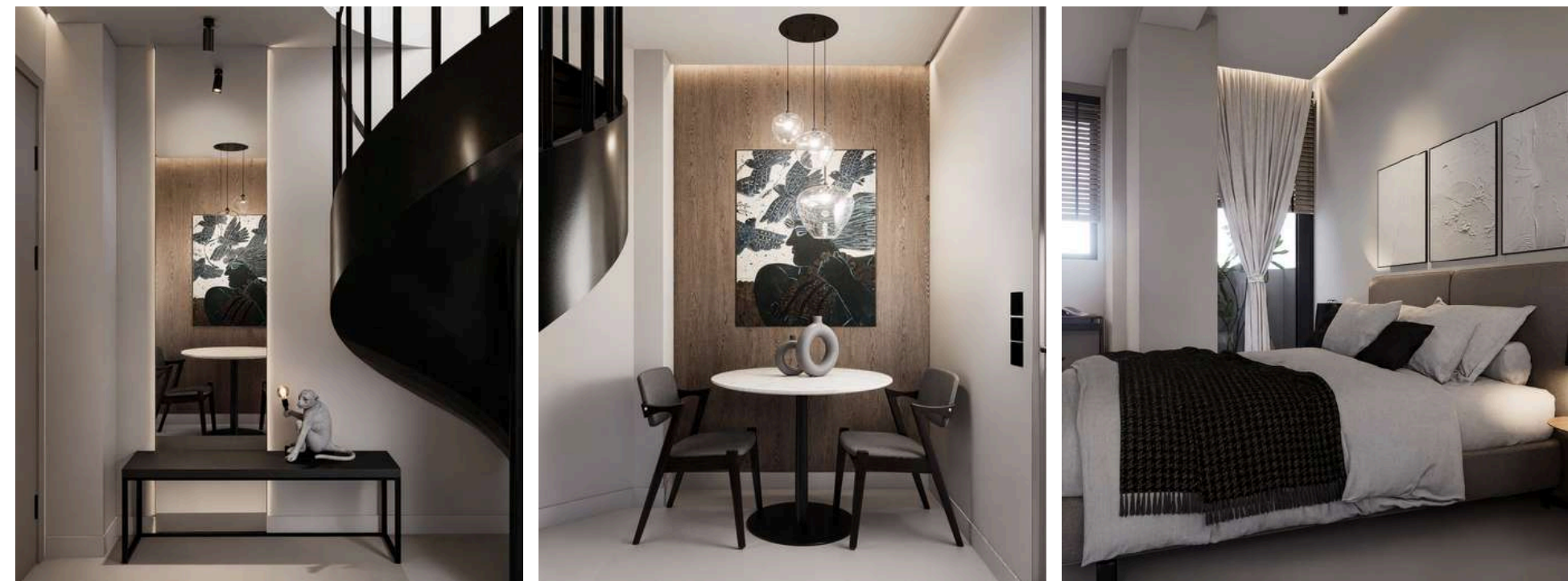


M5

34m² | 5m² balcony

250.000€

- 1 
- 1 



A' Floor



A6

SOLD

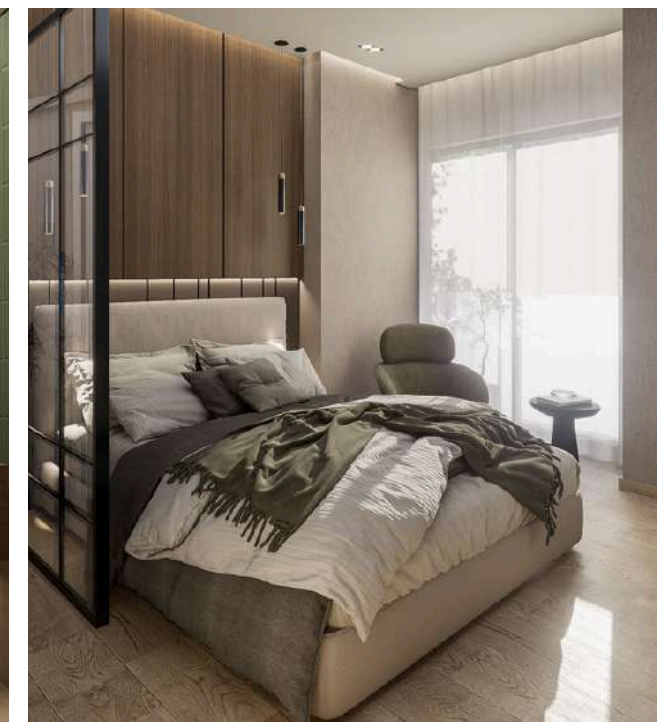
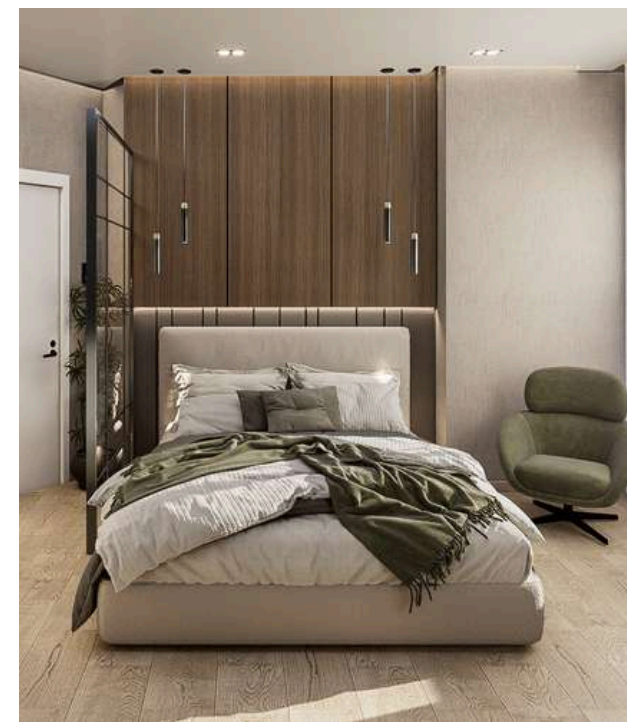
28.5m² | 3m² balcony



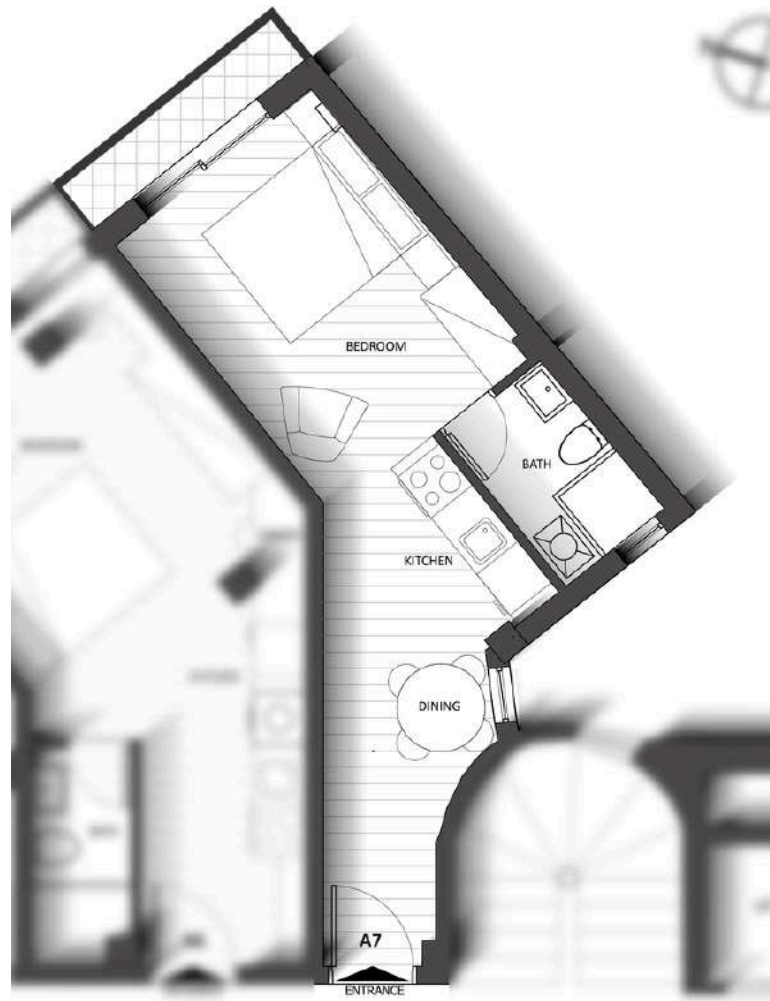
B6

SOLD

28.5m² | 3m² balcony



A' Floor



A7

SOLD

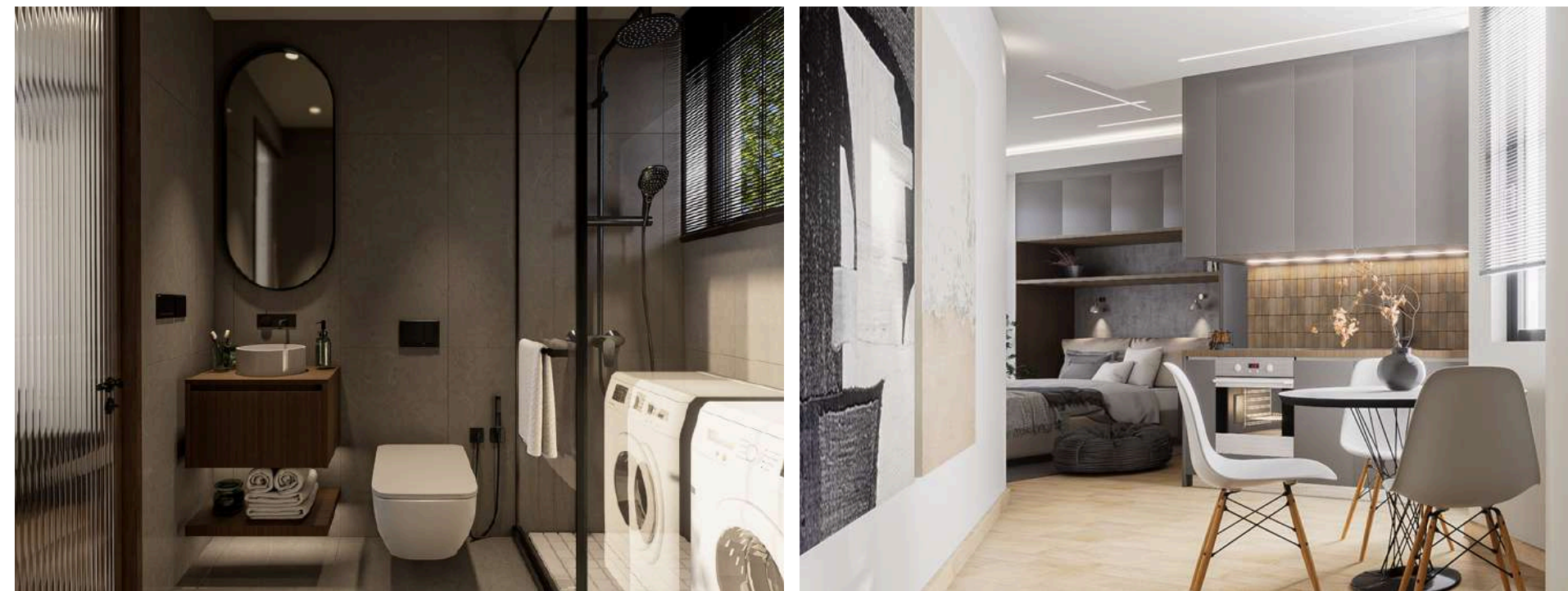
30m² | 3m² balcony



B7

RESERVED

30m² | 3m² balcony





APT	SQ.M. INSIDE	EXCLUSIVE USE OF YARD	BALCONY	TOTAL SIZE	FLOOR	B/R	PRICE ON BROCHURE
SF1	49m ²	61m ²	-	109m ²	SF	1	SOLD
SF2	49m ²	27.5m ²	3m ²	79.5m ²	SF	1	SOLD
M1	22.5 + 23.5 = 46m ²	24m ²	-	70m ²	SB & SF	1	299.000€
M2	24 + 33 = 57m ²	24m ²	-	81m ²	SB & SF	1	SOLD
M3	35 + 26 = 61m ²	-	4m ²	65m ²	SB & SF	1	300.000€
M4	27,5 + 20 = 47.5m ²	-	4m ²	51.5m ²	SB & SF	1	270.000€
A1	34.5m ²	-	4m ²	38.5m ²	1st	1	SOLD
A2	37m ²	-	6m ²	43m ²	1st	1	SOLD
A3	38m ²	-	3m ²	41m ²	1st	1	SOLD
A4	28.5m ²	-	11m ²	39.5m ²	1st	1	SOLD
A5	28m ²	-	1m ²	29m ²	1st	1	250.000€
A6	28.5m ²	-	3m ²	31.5m ²	1st	1	SOLD
A7	30m ²	-	3m ²	33m ²	1st	1	SOLD
M5	17 + 17 = 34m ²	-	5m ²	39m ²	1st - 2nd	1	250.000€
B1	35m ²	-	4m ²	39m ²	2nd	1	SOLD
B2	37m ²	-	6m ²	43m ²	2nd	1	SOLD
B3	37m ²	-	3m ²	40m ²	2nd	1	SOLD
B4	30.5m ²	-	8m ²	38.5m ²	2nd	1	SOLD
B5	27m ²	-	1m ²	28m ²	2nd	1	250.000€
B6	28.5m ²	-	3m ²	31.5m ²	2nd	1	SOLD
B7	30m ²	-	3m ²	33m ²	2nd	1	SOLD