

# ATHINUM 1

LUXURY PENTHOUSE  

---

CENTER OF ATHENS



# ATHINUM 1

## Luxury Penthouse in Psyri | Center of Athens

**Turn-key, fully furnished and equipped**, this impressive **triplex penthouse** offers **3 bedrooms, 2 bathrooms, and 1 WC**, combining comfort, modern living, and **unbeatable location**.

Situated in a **brand-new 7-floor residential building** on the corner of **Platia Eleftherias** and **Korinis Street**, directly facing **Komoundourou Park**, this home enjoys one of the most vibrant settings in the historical triangle of **central Athens**. Just a short walk from **major attractions, cultural landmarks, and city life**, it offers both convenience and prestige.

The penthouse features:

- A **spacious interior designed** for both family living and entertaining.
- **Acropolis-view rooftop terrace** with garden furniture, perfect for soaking in the Athenian skyline.
- Additional **park views**, bringing greenery and tranquility to the urban setting.
- **Fully fitted kitchen** with **modern appliances**, and **air conditioning throughout**,
- **Three king-size bedrooms** plus a sofa bed, offering comfort and flexibility for family living or hosting guests.
- Private **climate-controlled jacuzzi**, creating a true spa-like retreat at home.
- Eligible for the **Greek Golden Visa** program

With a price of **€950,000** and an **available payment plan**, this penthouse is not only a luxury home but also an **exceptional investment**, licensed for **short-term rentals** and estimated to generate around **€60,000 annually** in rental income in this high-demand area.

Experience the perfect blend of **modern luxury, historic charm**, and **urban convenience** in this exclusive Athens penthouse.

# LOCATION



Korinis 11, Athina  
105 53, Greece



1 min walk from the  
nearest bus stop



7 min walk from Thisio  
Metro station



8 min walk from  
Monastiraki Square



8 min walk from  
Omonia Square



22 min walk from the  
Acropolis of Athens



34 min drive from the  
Athens International  
Airport





## EXTERNAL PERSPECTIVES

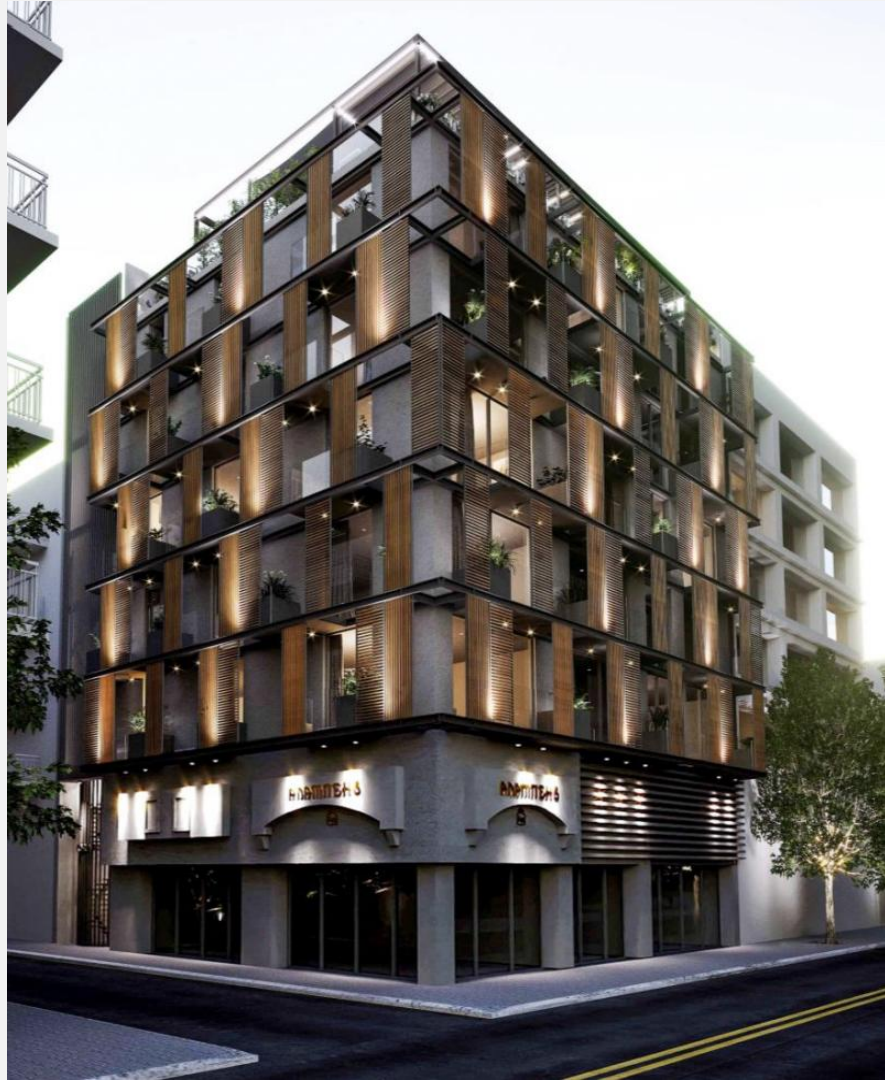
Building entrance





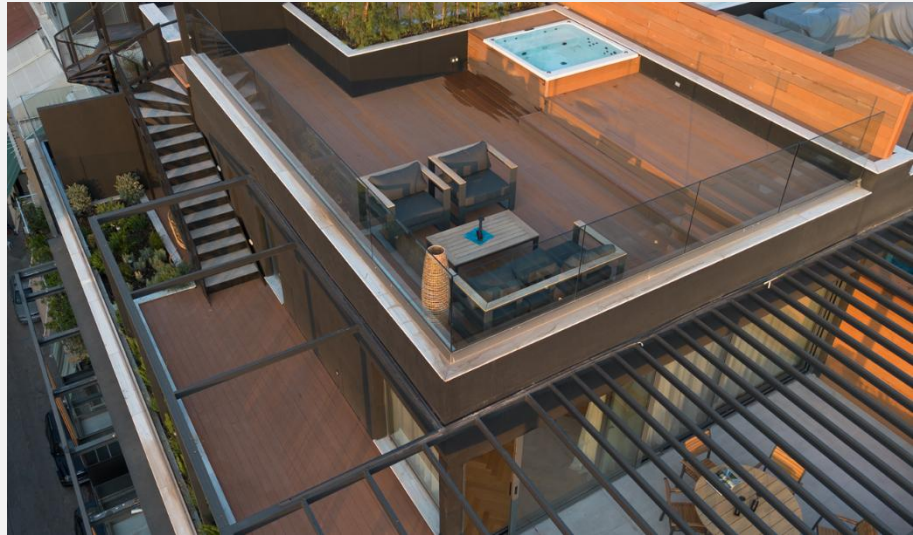
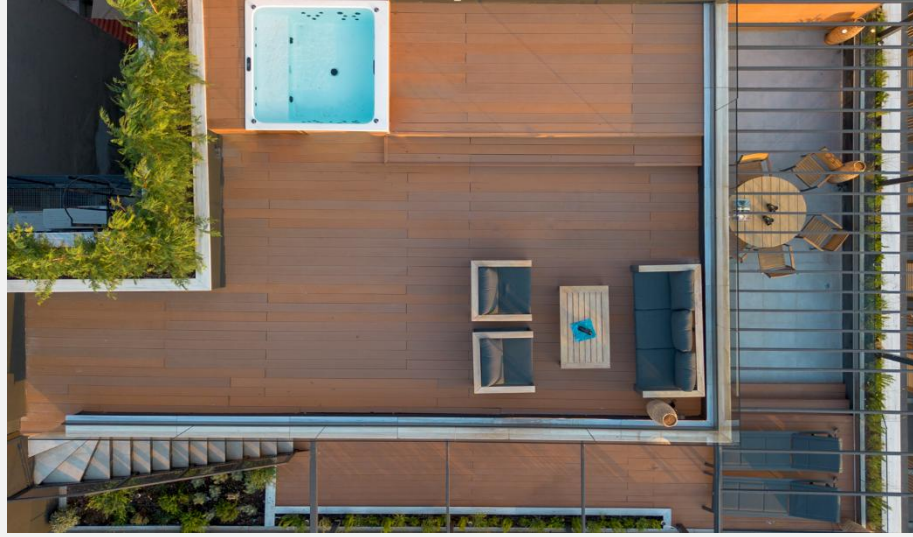
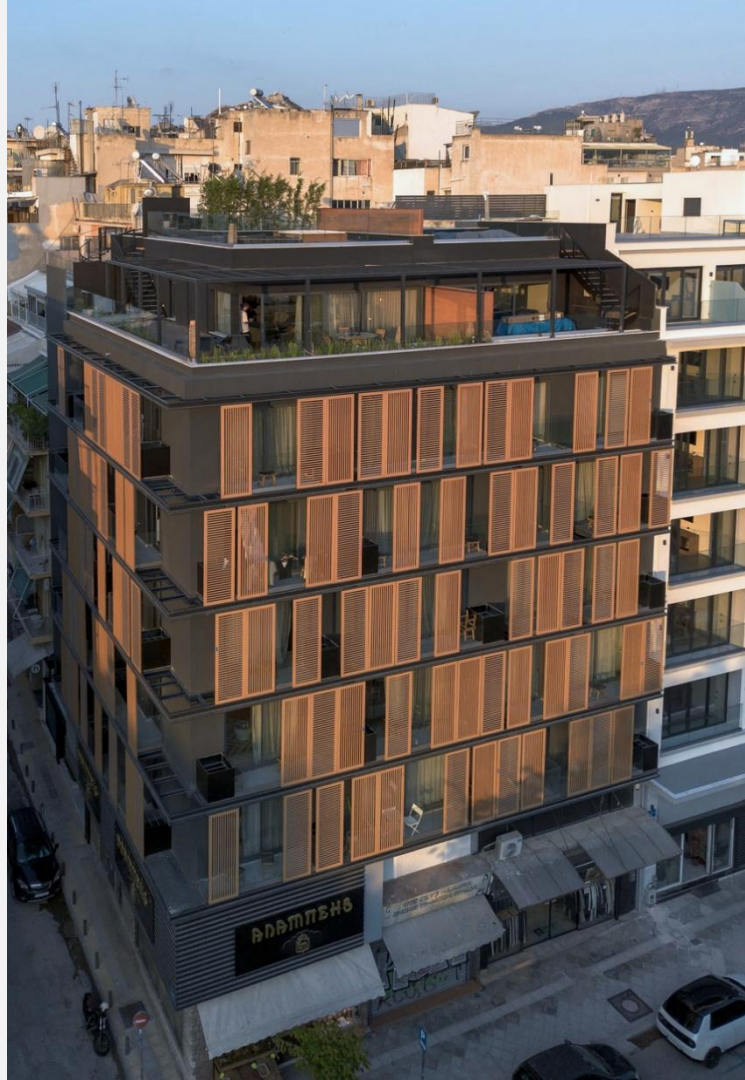
# EXTERNAL PERSPECTIVES

External perspectives





# BUILDING EXTERIOR - TOP VIEW 5<sup>TH</sup> 6<sup>TH</sup> 7<sup>TH</sup> FLOORS



## ENTRY LEVEL 6<sup>TH</sup> FLOOR – LIVING AREA





## ENTRY LEVEL 6<sup>TH</sup> FLOOR – LIVING AREA

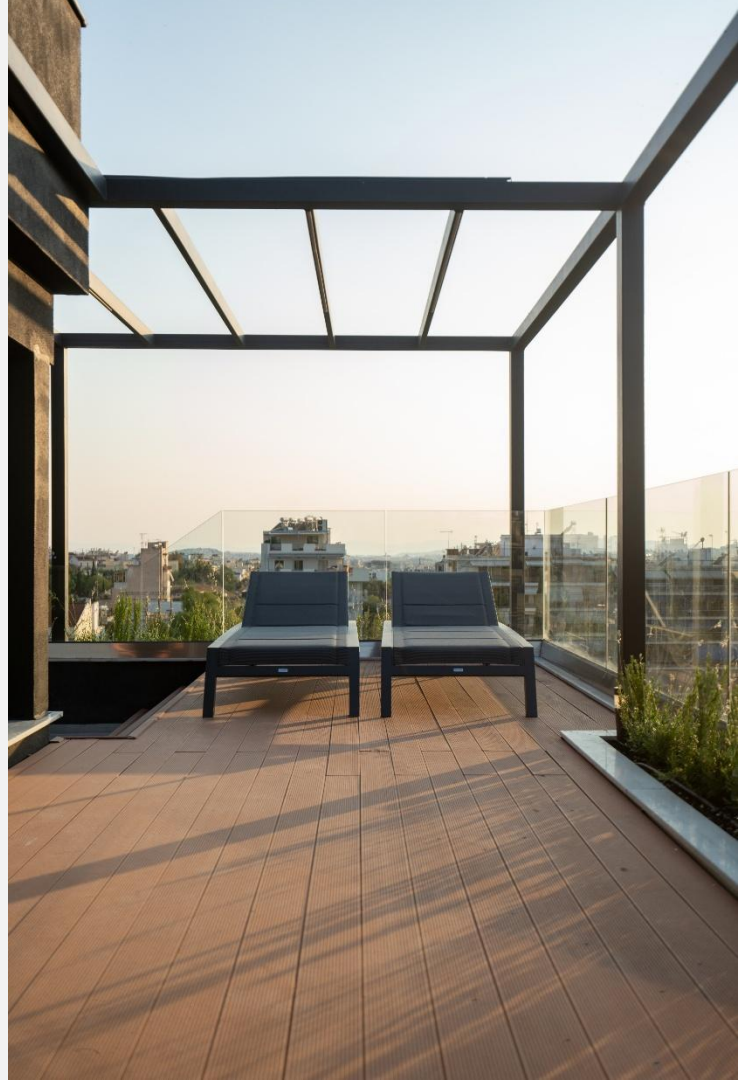




## ENTRY LEVEL 6<sup>TH</sup> FLOOR – LIVING AREA



## ENTRY LEVEL 6<sup>TH</sup> FLOOR - TERRACES





**ENTRY LEVEL 6<sup>TH</sup> FLOOR - WC - STAIRCASE**

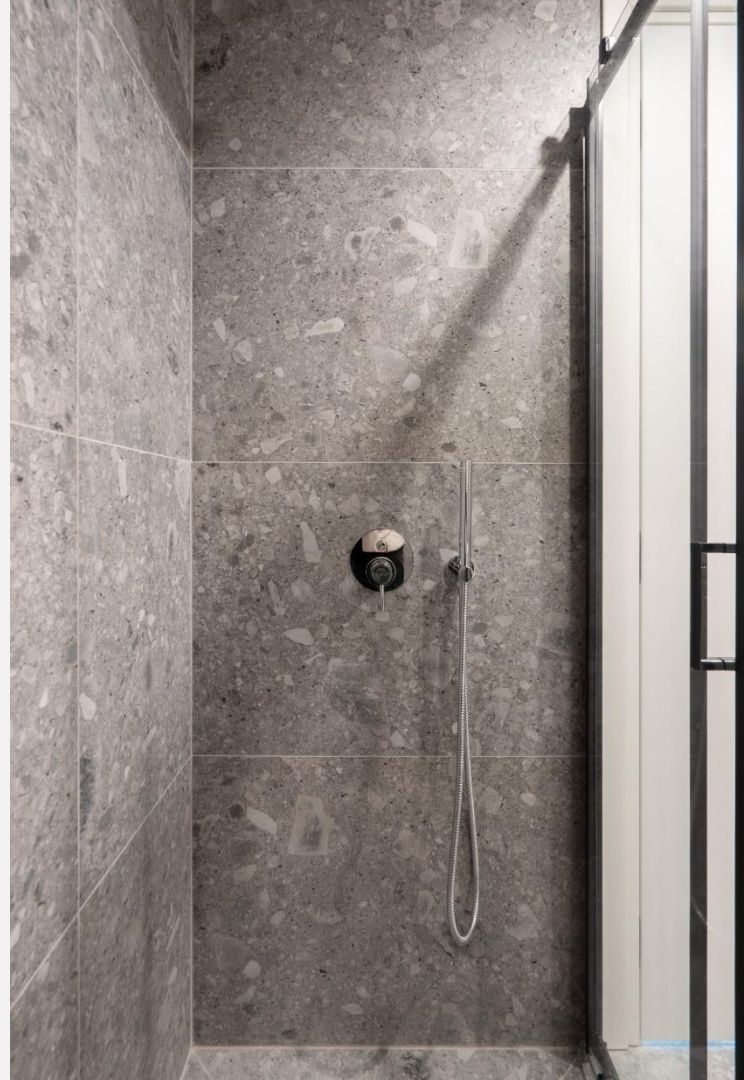


## MASTER BEDROOM – LOWER LEVEL 5<sup>TH</sup> FLOOR



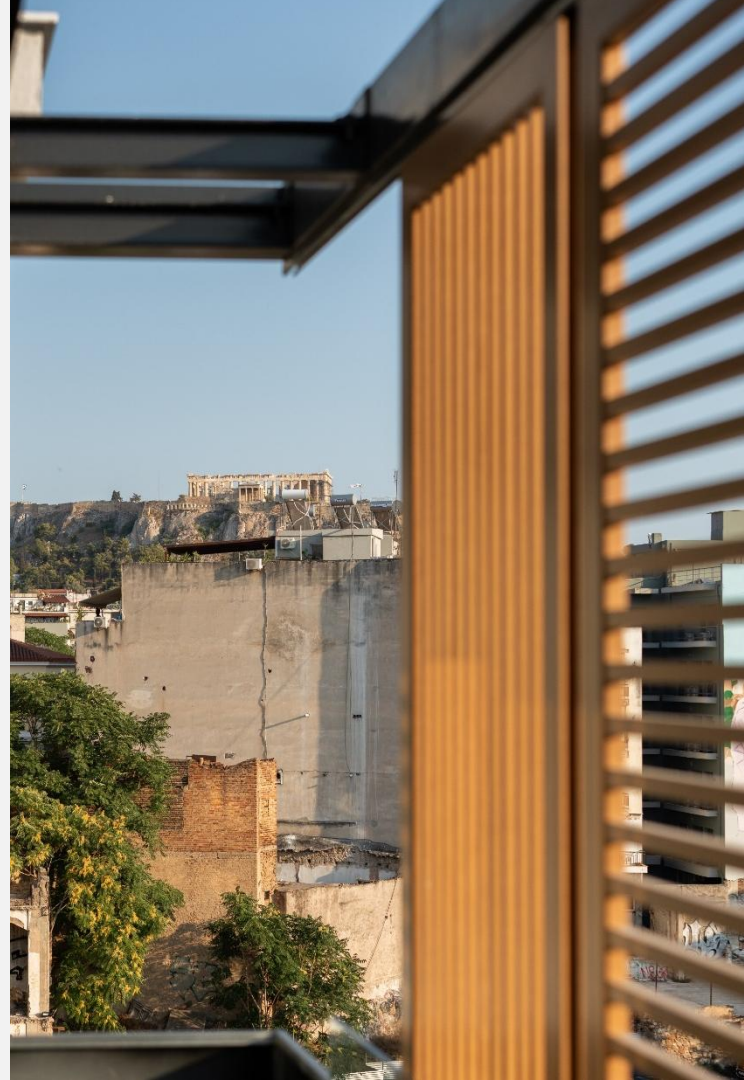


## MASTER BEDROOM – LOWER LEVEL BATHROOM





## MASTER BEDROOM – LOWER LEVEL BALCONY





## SECOND BEDROOM – LOWER LEVEL 5<sup>TH</sup> FLOOR

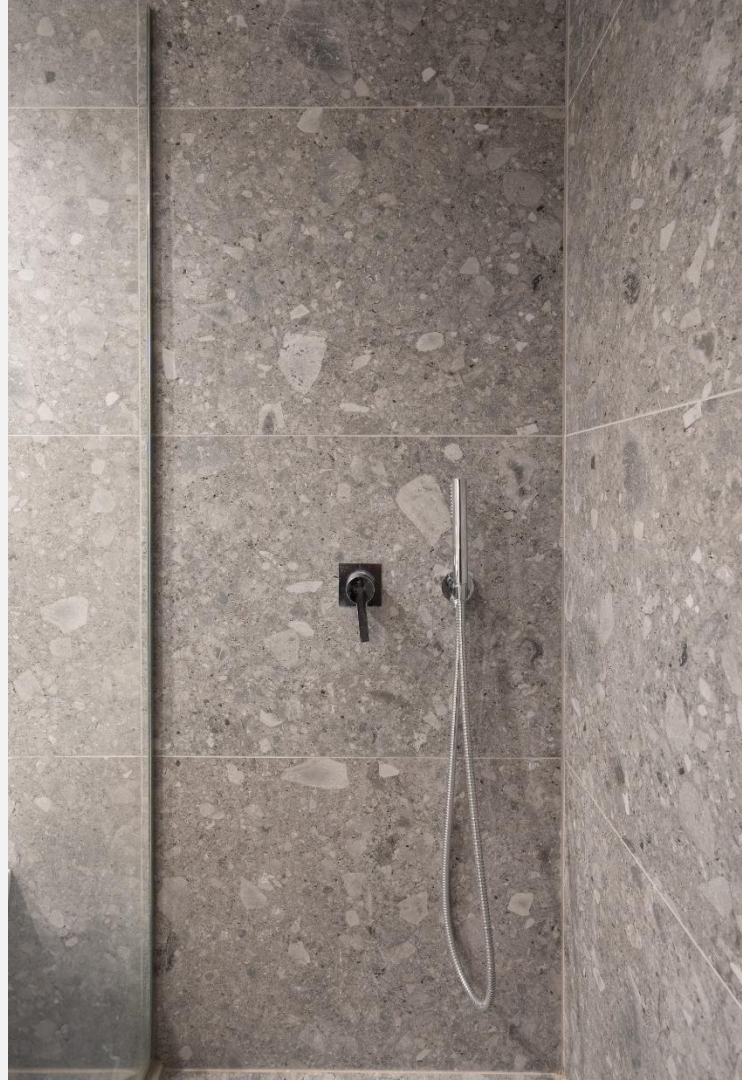


## THIRD BEDROOM – LOWER LEVEL 5<sup>TH</sup> FLOOR





## LOWER LEVEL 5<sup>TH</sup> FLOOR – BATHROOM



## LOWER LEVEL 5<sup>TH</sup> FLOOR - HALLWAY - STAIRCASE





## UPPER LEVEL 7<sup>TH</sup> FLOOR – ROOFTOP TERRACE



# PENTHOUSE D

## FIFTH, SIXTH AND SEVENTH FLOORS

TOTAL INTERIOR SURFACE : 121 SQM

TOTAL EXTERIOR SURFACE : 144 SQM



Interior Surface 65.00 m<sup>2</sup>



Terrace Surface 71.00 m<sup>2</sup>



1 WC



6<sup>th</sup> Floor



Open-plan Kitchen



Park View



ENTRY LEVEL / 6th FLOOR



# PENTHOUSE D



3 Bedrooms



2 Bathrooms



Interior Surface 56.00 m<sup>2</sup>



Balcony Surface 6.00 m<sup>2</sup>



5<sup>th</sup> Floor



Park View



LOWER LEVEL / 5th FLOOR

# PENTHOUSE D



Rooftop Terrace Surface 67.00 m<sup>2</sup>



7<sup>th</sup> Floor



Jacuzzi Spa



Acropolis View



ROOF TOP / 7th FLOOR



# ATHINUM 1



*Thank you*

FOR YOUR TRUST