

# ATHINUM 1

LUXURY APARTMENT  

---

CENTER OF ATHENS



# ATHINUM 1

## Luxury 2-Bedroom Apartment in Psyri | Center of Athens

Turn-key, fully furnished, and equipped, this elegant **88 sqm** residence offers **2 bedrooms and 2 bathrooms**, perfectly combining comfort, modern design, and **prime central location**.

Located on the **4th floor** of a brand-new 7-floor residential building at the corner of **Platia Eleftherias and Korinis Street**, the apartment overlooks **Komoundourou Park**, placing you right in the heart of Athens' vibrant historical triangle; just steps from key attractions, cultural landmarks, and the city's dynamic lifestyle.

### Highlights:

- Contemporary interiors with open-plan living and dining spaces
- Fully fitted kitchen with modern appliances
- Air conditioning throughout
- Park views bringing light and calm into the home
- Licensed for **short-term rentals**, with an estimated **€30,000 annual revenue**

**Price:** €475,000

Enjoy an exceptional investment opportunity and modern city living at its finest — in one of Athens' most sought-after neighborhoods.

# LOCATION



Korinis 11, Athina  
105 53, Greece



1 min walk from the  
nearest bus stop



7 min walk from Thisio  
Metro station



8 min walk from  
Monastiraki Square



8 min walk from  
Omonia Square



22 min walk from the  
Acropolis of Athens



34 min drive from the  
Athens International  
Airport





## EXTERNAL PERSPECTIVES

Building entrance



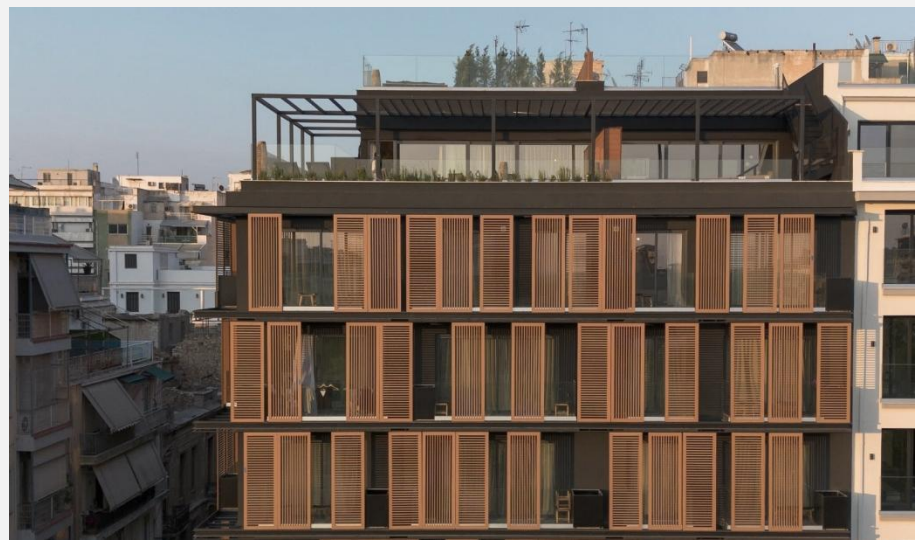
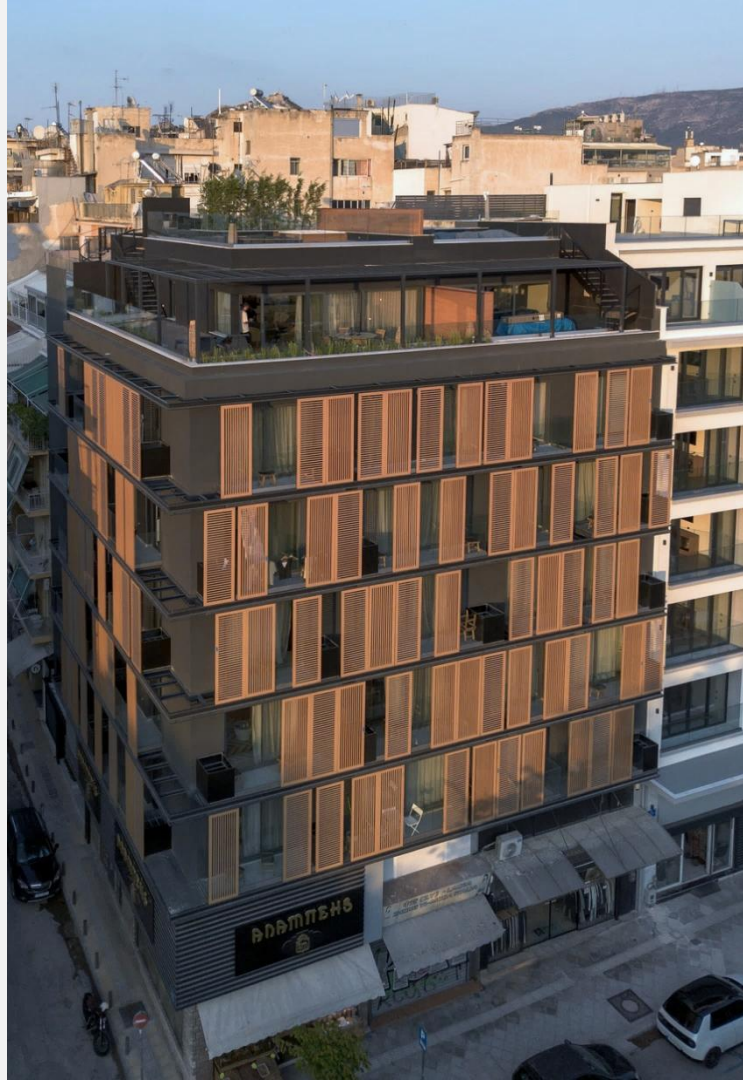


# ATHINUM 1





**BUILDING EXTERIOR - TOP VIEW 5<sup>TH</sup> 6<sup>TH</sup> 7<sup>TH</sup> FLOORS**



## LIVING AREA





## LIVING AREA

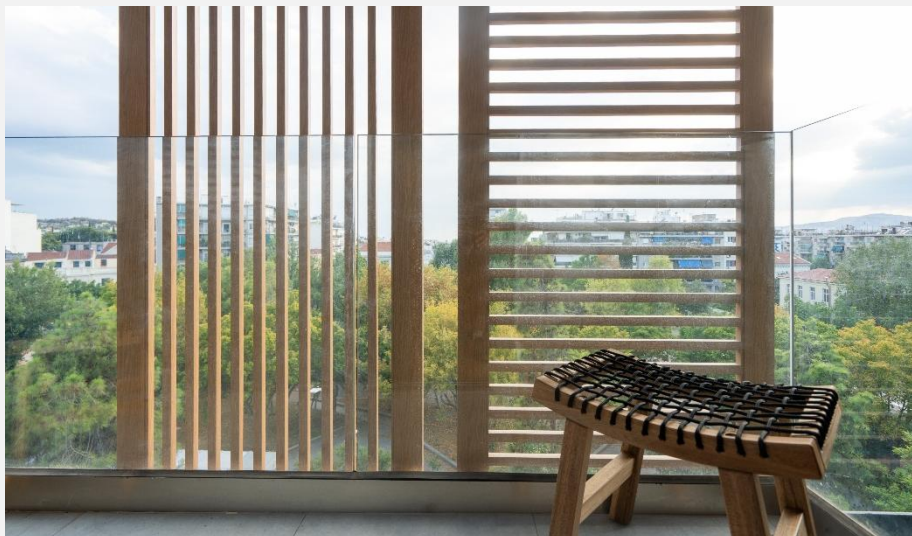




# KITCHEN



# MASTER BEDROOM

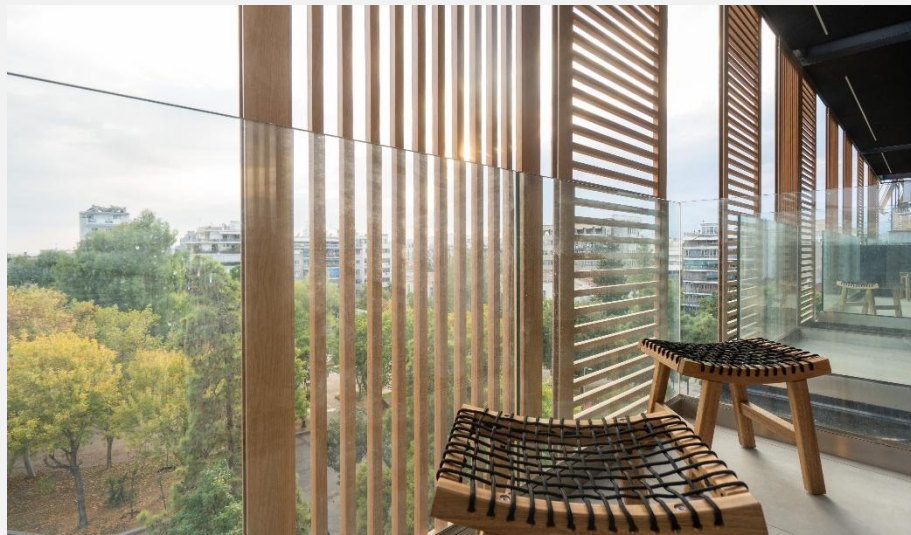




## MASTER BEDROOM – BATHROOM

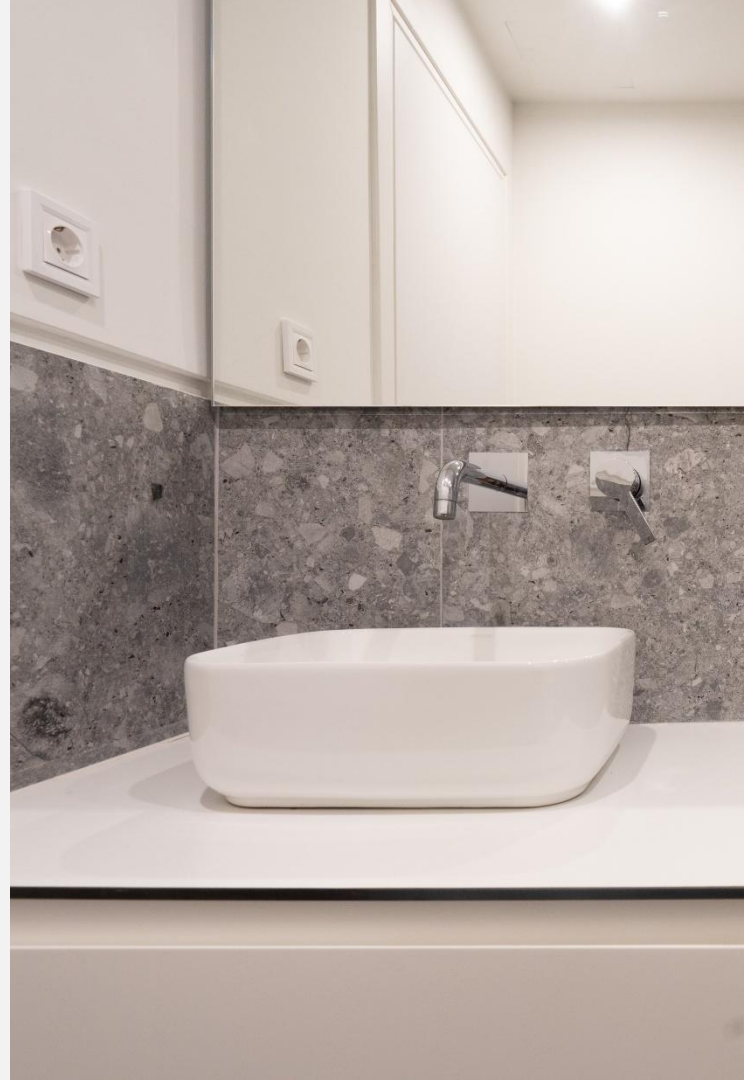


## SECOND BEDROOM





## SECOND BATHROOM



## HALLWAY – BALCONY





# APARTMENT F-C

## FOURTH FLOOR

TOTAL INTERIOR SURFACE : 88 SQM

TOTAL EXTERIOR SURFACE : 5.16 SQM



Interior Surface 88.00 m<sup>2</sup>



Balcony Surface 5.16 m<sup>2</sup>



4<sup>h</sup> Floor



Open-plan Kitchen



Park View



4<sup>th</sup> FLOOR

*Thank you*

FOR YOUR TRUST